

ORREFORS 

2024



DESIGNERS



LENA BERGSTRÖM

Lena Bergström (b. 1961) is a successful designer of both textiles and glass. She has received numerous public commissions and has won Excellent Swedish Design awards for six of her glass collections. Lena received her artistic education at the College of Arts, Crafts and Design in Stockholm. She became captivated by glass and has been affiliated to Orrefors since 1994. She has an unerring sense of design; her work, soft of line yet graphically eloquent, represents a new generation of expression.



BJÖRN DAHLSTRÖM

Björn Dahlström (b. 1957) is a leading Swedish designer. The graphic quality of his unique style is distinctive through its approach to expressing soft, fundamental shapes. Björn's work is currently represented at museums worldwide, including the Victoria and Albert Museum in London, Nationalmuseum in Stockholm and the Centre national des arts plastiques in Paris.



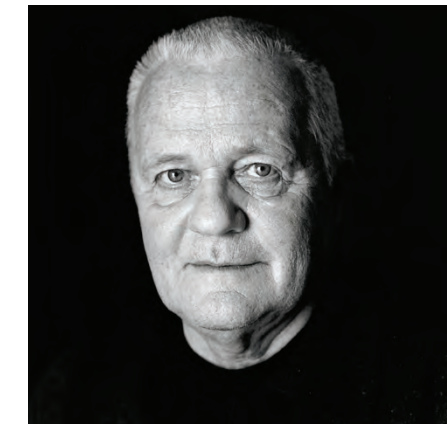
EMMA EKBERG

Emma Ekberg (b. 1977) grew up in Gothenburg and has a Master of Fine Arts from the University College of Arts, Crafts and Design in Stockholm. As an industrial designer, Emma regularly confronts new worlds and new challenges, both through the various products she is asked to create and in her travels. Each design has its own story – and new stories are continuously born in the interaction between the user and the object.



GUNNAR CYRÉN

Gunnar Cyrén (1931-2013) was a Swedish glass artist, silversmith and industrial designer. He started at Orrefors glassworks in 1959. Highlights of his design career include "Popglaset" or "Pokaler med färgade ben" (1966-1968) and "Nobel stemware" (1991). Over the years Gunnar Cyrén has participated in numerous exhibitions in Sweden and abroad and received the Swedish royal scholarship in 1962, the Lunning Prize in 1966 and the Prince Eugen Medal in 1988.



LARS HELLSTEN

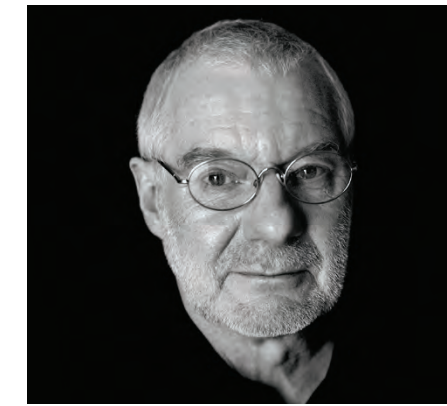
Lars Hellsten (b. 1933) studied sculpture at the College of Arts, Crafts and Design in Stockholm before coming to Orrefors in 1972. Besides Eden, a service inspired by nature, he is also the designer behind such collections as Corona, Odyssey, Neptunus and the heart-shaped Amour and My Heart.

Nature clearly inspires his art glass, too, including many grand pieces well suited to public spaces. His glass is characteristically massive and forceful, whether it be cast, mould-blown or free-blown.



LISA HILLAND

It is a universal truth that opposites attract and create harmony. Hot and cold, hard and soft, black and white. You can't have one without the other. When designer Lisa Hilland was asked to create a vase for Orrefors that was just as beautiful with or without flowers, she chose to contrast the exclusive crystal with metal. BLOOM is inspired by the organic shapes in nature, such as flowers and leaves. It is as perfect holding an exquisite bouquet as it is with a simple branch of ivy, but is also stunning in its own glory when the clear Orrefors crystal catches the light just right.



JAN JOHANSSON

Jan Johansson (1942-2018) came to Orrefors in 1969 after training as a silversmith in Stockholm at the College of Arts, Crafts and Design. As an artist, he was interested in refining the optical effects of pure, sculptural crystal, as in his cut-glass barware series Street. "I want to shape the crystal by controlling the light. If the light dies, so does the glass."



ERIKA LAGERBIELKE

Erika Lagerbielke (b. 1960) is a professor of glass design and has collaborated over thirty years with Orrefors. Erika have a sensual and stylish design with a clear sense of material understanding. – I design for the senses, says Erika. The glass should highlight the drink, have a good balance and also be a delight to the eye. The range Intermezzo is one of her very first products and one of Orrefors best-selling stemware.



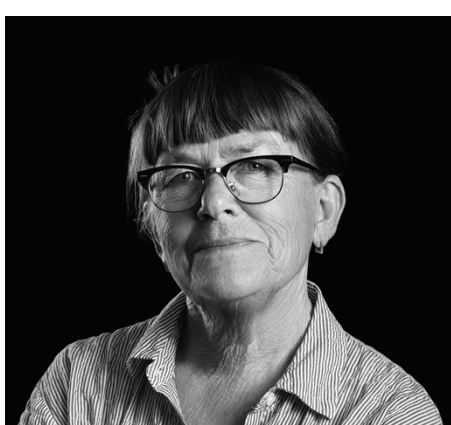
MALIN LINDAHL

Malin Lindahl (b. 1973), design talent with an innovative approach to established techniques. After studies at the College of Arts, Crafts and Design in Stockholm, Malin Lindahl came to Orrefors on a scholarship in 1999. The lustre of clear crystal, its transparency and infinite potential for optical surprises, is what originally drew her to glass.



PER MORBERG

Per Morberg (b. 1960) is a successful Swedish actor, chef, best selling author and entertainer who has become a designer at Orrefors. No matter what he undertakes his motto is “only the best will do.” Per Morberg is known as a passionate artist with a keen sense of design and detail. His goal is clear – to make beautiful, useful, high-quality products that will be enjoyed by users today and in coming generations.



ANNE NILSSON

Anne Nilsson (b. 1953). After being trained in glass and ceramics at the University College of Arts, Crafts and Design in Stockholm, she became a designer at Höganäs Keramik AB. Since 1982 she has created several popular glass series for Orrefors. The Raspberry series and the Celeste candleholders are just a few. In fact, she’s received the Excellent Swedish Design award for 15 different product series. She creates unexpected, simple forms that add a touch of beauty to everyday life.



INGEGERD RÅMAN

Ingegerd Råman (b. 1943) is one of Sweden’s most renowned glass-designers. Over the years, Ingegerd Råman has received numerous awards for her work, and in 1995 she was awarded a Swedish government professor’s title. Her collections for Orrefors are all characterised by the purity of line and functionality.



MARTTI RYTKÖNEN

Martti Rytkönen (b. 1960) studied glass and ceramics at the College of Arts, Crafts and Design, although it was glass that captured his heart. The pure, clear crystal is his imaginative medium of choice, one which he cuts, etches, sandblasts and engraves to bring forth new graphical motives and effects. His motives are often narrative and full of humour.



CLAESSON KOIVISTO RUNE

Claesson Koivisto Rune is a Swedish architecture and design studio founded in 1995 by Märten Claesson, Eero Koivisto and Ola Rune. Their multifaceted work includes everything from furniture and private residences to hotels and art galleries. Some of their prestigious projects have included the Operakällaren restaurant in Stockholm, the Inde/ Jacobs Gallery in Marfa, Texas and the K5 Hotel in Tokyo. They have received almost a hundred awards for their work, including Designer of the Year, Excellent Swedish Design and the Red Dot Design Award.



PIA TÖRMELL

Pia Törnell works as a designer with glass and ceramics. The work ranges from the practical and functional of the mass-produced utensils, to an approach in a pure form of artistic expression. “I’m looking for objects that have found their shape and which occasionally stretches on the boundary of unexpected. Where the expression is both clear and sensual.”



MAGNUS FORTHMEIIER

Magnus Forthmeiier (b. 1963) has spent nearly three decades designing fashion, textiles and ceramics for a wide range of Swedish and international clients. His designs are characterised by simplicity, clean lines and usability. At Orrefors, his latest designs are the patterns for the Graphic, Organic and Confusion vases.

Orrefors New Arrivals AW23

Top 10 Collections



1. Carat



2. Intermezzo



3. City



4. Erik



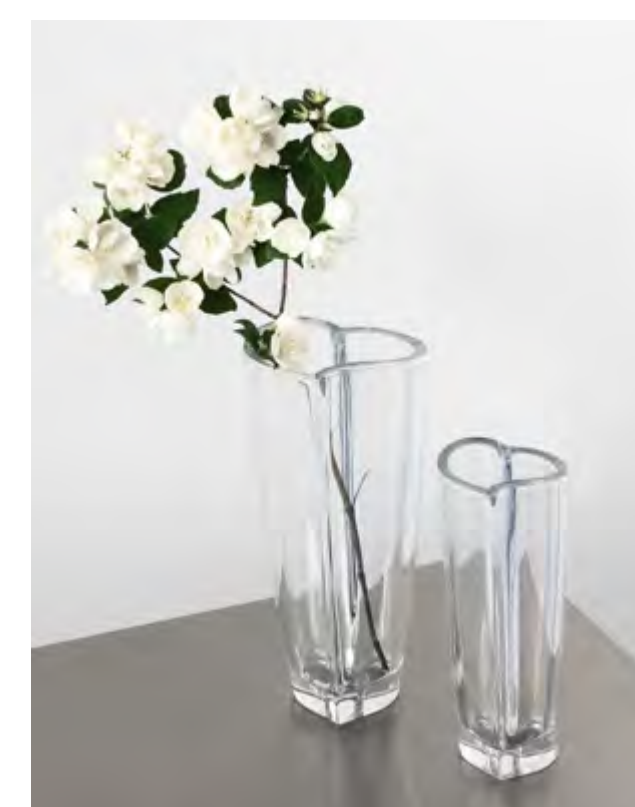
5. Street



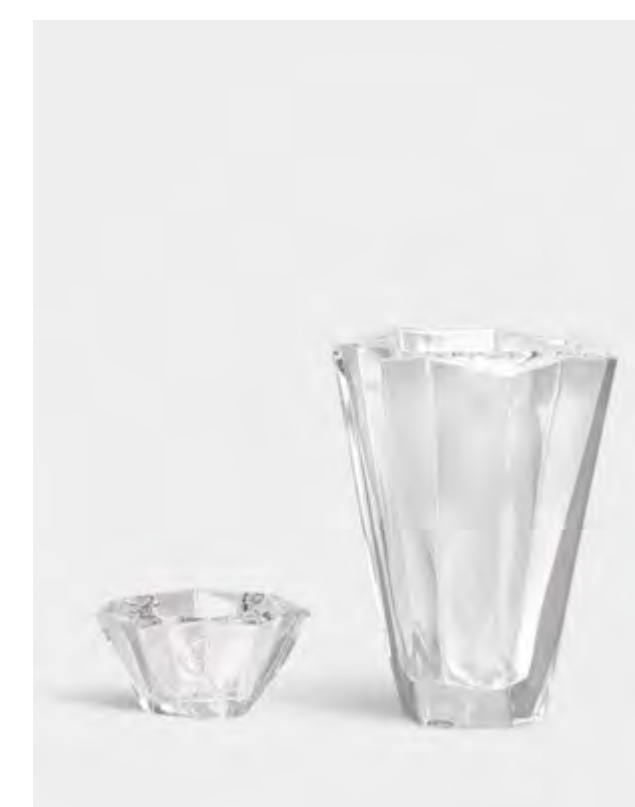
6. Awards



7. More



8. Heart



9. Precious



10. Sofiero

125

We Celebrate 125 Years Swedish Craftsmanship Since 1898

Orrefors has always been about looking ahead. In search of new techniques, expressions, forms – and designers. Curious to discover more of the endless possibilities of glass.

From the very beginning, our signature has been to bring together traditional craftsmanship with contemporary visionaries. Combining history with the present – to shape the future. This formula has resulted in some of our greatest successes.

As we now celebrate Orrefors' 125th anniversary, we aim to reach a larger audience than ever before. In addition to relaunching selected parts of our extensive catalog, we are constantly establishing new collaborations with leading designers.

Welcome to follow Orrefors in our work to advance the boundaries of glass and design and through this create iconic products for future generations.





5 reasons why you should work with Orrefors

- Large inventory in the US with a quick turnaround time
- Award-winning elegant Scandinavian design
- Heritage since 1898; our experience spans more than 7 generations
- Our renowned designers create elegant products for retail, museums, art galleries, and special projects
- Sustainability - One of the leading sustainable factories in Europe and one of the first to remove lead from our own production back in the 1970s

Orrefors has been established in Swedish design tradition since 1898, characterized by timeless aesthetics, functionality, craftsmanship, and sustainable quality. Orrefors offers premium products designed by well-known designers for an audience interested in Scandinavian design. The glass and shape are always in focus, combined with elegance, simplicity, and confidence.

Even though the holding company is placed in Kosta, Sweden, the daughter company has expanded in the US. Therefore, we have built a significantly large inventory in our warehouse. You can also visit our showroom at 41 Madison in New York, to see our beautiful products.

Our elegant products are designed by well-known artists and designers, like Lena Bergström who is behind the best-selling collection Carat and Ingegerd Råman, whose elegant style continues to be an objective for the future.

Orrefors produces products considered award-winning Scandinavian designs, therefore many of our collections have received awards for Excellent Swedish Design like Merlot in 1995, Puck in 1999, and Celeste candlesticks in 1992.



Sustainability

Our goal is to create timeless and elegant glass for everyday use, as well as design objects that last from one generation to the next - exactly as we've been doing since 1898. Orrefors glass constitutes sustainable design that creates a more beautiful world.

Our glass

At Kosta Glassworks, we have worked with non-lead glass since the late 1990s and our partners have worked with non-lead glass since 2019.

Transportation

When choosing how to transport our products to, from, and within Sweden, we always keep the environment in mind. To the extent possible, we ship by sea rather than by road or air, and we make sure to pack the vehicles or containers completely to reduce the number of transports. We continuously test our products that are intended for contact with food, to ensure the glass does not transfer any substances to the food.

People

Just like us, all of our partners within and outside the EU must comply with our Code of Conduct, which ensures fundamental working conditions, the right to form trade unions, regulations for minimum pay, overtime pay, and limits to working hours. The Code of Conduct also includes bans on child labor and discrimination. We visit our suppliers annually to ensure high quality and compliance with these rules. The majority of our partners are in the EU.

Our goals for a better world

At the Kosta Glassworks in the south of Sweden, we constantly work on refining the production of our main material – glass. As part of our improvement initiatives, we are currently working with four of the UN's Global Goals: clean water and sanitation, affordable and clean energy, innovation and infrastructure, and responsible consumption and production. At the glassworks in Kosta, we have our own treatment plant, and we reuse the water in the production process as much as possible. We also work with energy-saving measures such as efficient lighting, carbon-neutral ovens, and district heating for our premises. We always want to find new solutions and therefore partner with different institutions and universities. We are currently working with the research institute RISE on a project to look at process optimization to achieve the best possible glass quality. All waste from the production of clear glass at Kosta Glassworks is reused to make new glass, saving both natural resources and energy.

Our vision for the future

We're constantly working on improving the production of elegant, innovative design that contributes to a more sustainable world for centuries to come.



Content & Digital Assets

Inspirational assets have never been more crucial

New Imagery

Throughout the year our marketing team’s primary focus has been to implement the new Orrefors graphic profile into all channels. Along with photographers, we have developed new conceptual images and videos to share with you. Not only do we have new beautiful product shots, but also environmental images as well as lifestyle shots in real settings. You can view them on our website, and download them easily from our Asset Bank <https://okb.assetbank-server.com/>.

New Copy

We are continuously updating our copy and making it more modernized; both on product level as well as collection level. You can already see this on our website and this material will also be available for you to use on your own website/marketing material. Please reach out to our customer service team at customercare@orrefors.us for our updated copy texts.

Collections that have received new imagery

- City
- Informal
- More Barware
- Legend
- Raspberry
- Carat
- Pulse
- Intermezzo





Benjamin Hubert

About the designer

Benjamin Hubert (born 1984) is an award-winning British design entrepreneur, and founder of creative agency, LAYER. LAYER is focused on experience-driven design for both the physical and digital worlds. Led by Benjamin and a growing creative team, LAYER is partnering with forward-thinking brands – including Nike, Google, Bang and Olufsen, Samsung and Braun– to create products that will help define the way we live, work, and communicate in the future, from A.I to smart wearables and furniture systems, to the next generation of media devices and mobile communication tools.



Ensemble

Design Benjamin Hubert

Ensemble from Orrefors is a collection of two-part vases/bowls from acclaimed British designer Benjamin Hubert. With a toned-down color scheme and minimalistic lines, they bring out the best in any flower constellation. Since the individual parts are interchangeable, you can choose exactly how to group and shape your Ensemble, inside and out.

- By award-winning British designer Benjamin Hubert
- Arrange the top pieces with the bottoms freely for unique constellations
- Beautiful with flowers or as a decorative piece
- Subtle colors for easy placement in any setting
- Minimalistic Scandinavian design



NEW 6580022
Ensemble Small
Smokey Blue/Gray
H 2.4" W 6.3"
\$125

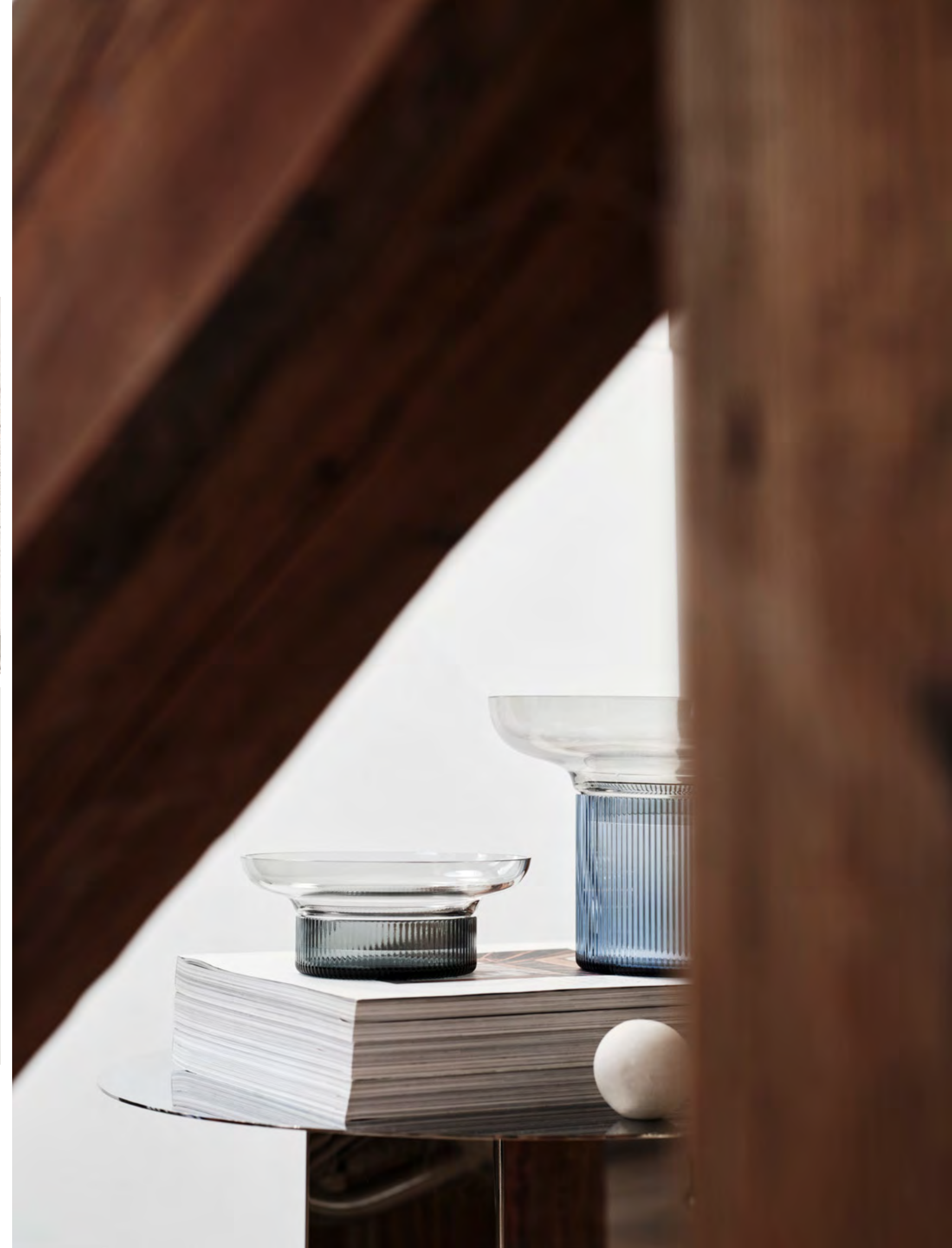


NEW 6580023
Ensemble Medium
Blue/Gray
H 5.9" W 7.7"
\$175



NEW 6580024
Ensemble Large
Brown/Gray
H 8.7" W 9.7"
\$225

Assets





Erika Lagerbielke

About the designer

Erika Lagerbielke (born 1960) studied at the University of Arts, Crafts & Design in Stockholm with a focus on industrial design. She is a professor of design at Linnaeus University, where she works with education and research in areas including the artifacts and culture of the meal, dining environments as generators of value, and the sustainable development of glass.

Lagerbielke began her collaboration with Orrefors in 1982, during her studies at the University of Arts, Crafts & Design, and had her major breakthrough with the Intermezzo series already in 1984. Her most acclaimed special projects include the wedding gift to Crown Princess Victoria and Prince Daniel Westling from the Swedish Parliament and government in 2010, Linnaeus University's vice-chancellor chain in 2010, Hook of Sigrid for the Diocese of Växjö in 2011, and a special set for Michelin restaurant Operakällaren in Stockholm in 2020.

Previous collections by the designer



Intermezzo



Enjoy



Metropol



More



Difference

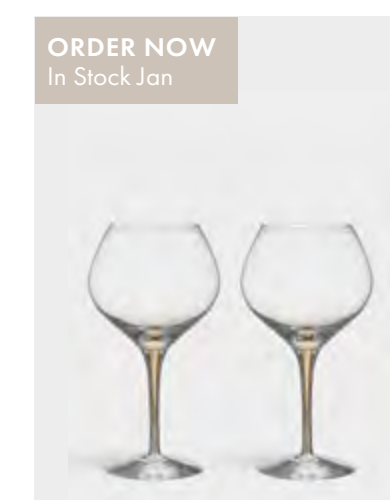
Click for Product Video

Intermezzo Gold

Design Erika Lagerbielke

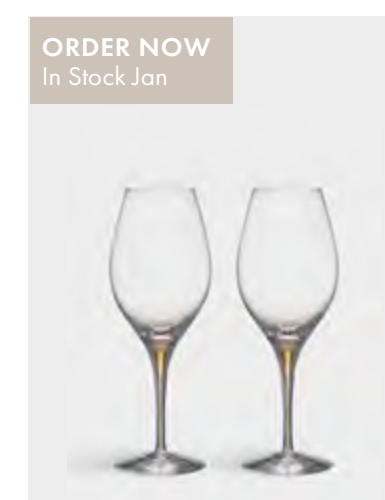
Intermezzo Gold is a true celebration. Sealed into the glass, rising up from the surface of the table, is a teardrop-shaped enigma. Erika Lagerbielke created a timeless classic in 1984 with the Intermezzo collection, originally designed in a blue color. In honor of Erika's 40 years as a designer at Orrefors, and in addition to Orrefors celebrating 125 years as a brand, Intermezzo is produced in a celebratory golden edition, delivering a festive elegance to the brand's most iconic tableware collection.

- A celebratory golden edition
- Mouth-Blown in Kosta, Sweden
- A line extension
- Adds a festive elegance



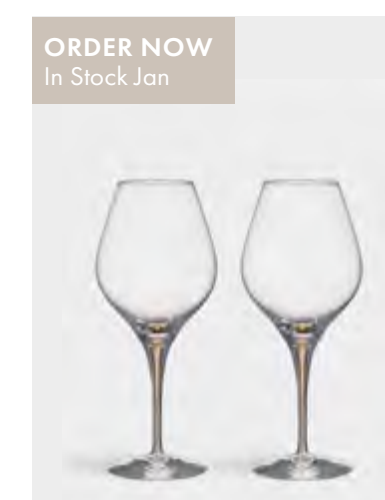
ORDER NOW
In Stock Jan

NEW 6577561
Intermezzo Gold Bouquet
H 8.7" W 4.5"
Set of 2
\$270



ORDER NOW
In Stock Jan

NEW 6577519
Intermezzo Gold Balance
H 9" W 3"
Set of 2
\$200



ORDER NOW
In Stock Jan

NEW 6577560
Intermezzo Gold Aroma
H 9.2" W 4"
Set of 2
\$270



ORDER NOW
In Stock Jan

NEW 6577585
Intermezzo Gold Carafe
H 12" W 3.8"
\$295

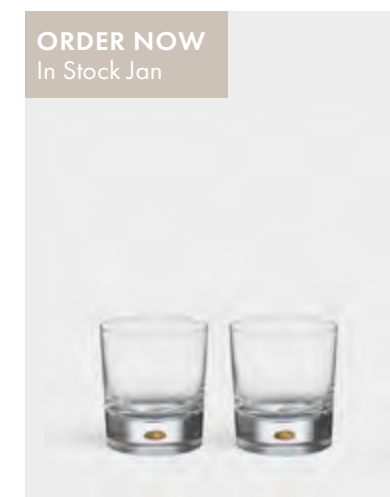
Click for Product Video

Intermezzo Gold

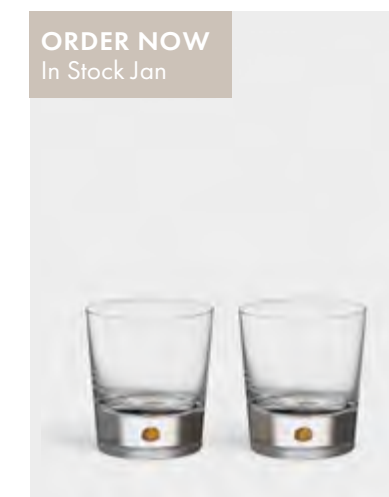
Design Erika Lagerbielke

Intermezzo Gold is a true celebration. Sealed into the glass, rising up from the surface of the table, is a teardrop-shaped enigma. Erika Lagerbielke created a timeless classic in 1984 with the Intermezzo collection, originally designed in a blue color. In honor of Erika's 40 years as a designer at Orrefors, and in addition to Orrefors celebrating 125 years as a brand, Intermezzo is produced in a celebratory golden edition, delivering a festive elegance to the brand's most iconic tableware collection.

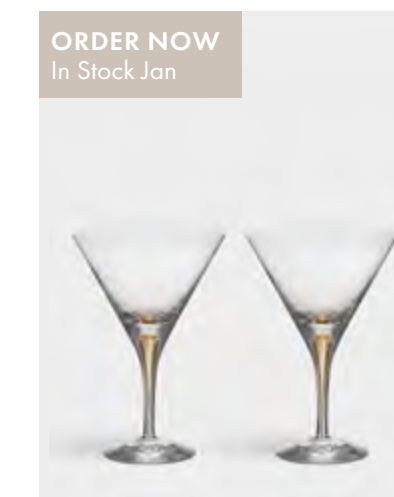
- A celebratory golden edition
- Mouth-Blown in Kosta, Sweden
- A line extension
- Adds a festive elegance



NEW 6577540
Intermezzo Gold Old Fashioned
H 3.5" W 3.5"
Set of 2
\$170



NEW 6577541
Intermezzo Gold DOF
H 3.9" W 3.6"
Set of 2
\$200



NEW 6577555
Intermezzo Gold Martini
H 6.7" W 4.4"
Set of 2
\$250



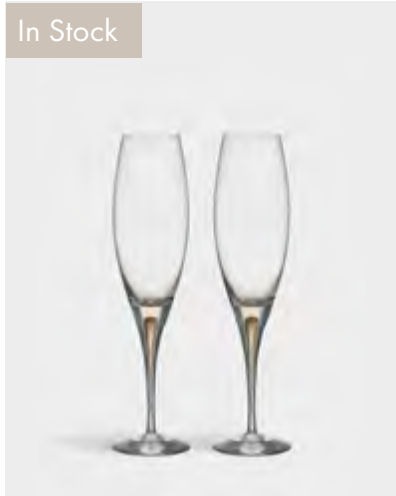
[Click for Product Video](#)

Intermezzo Gold

Design Erika Lagerbielke

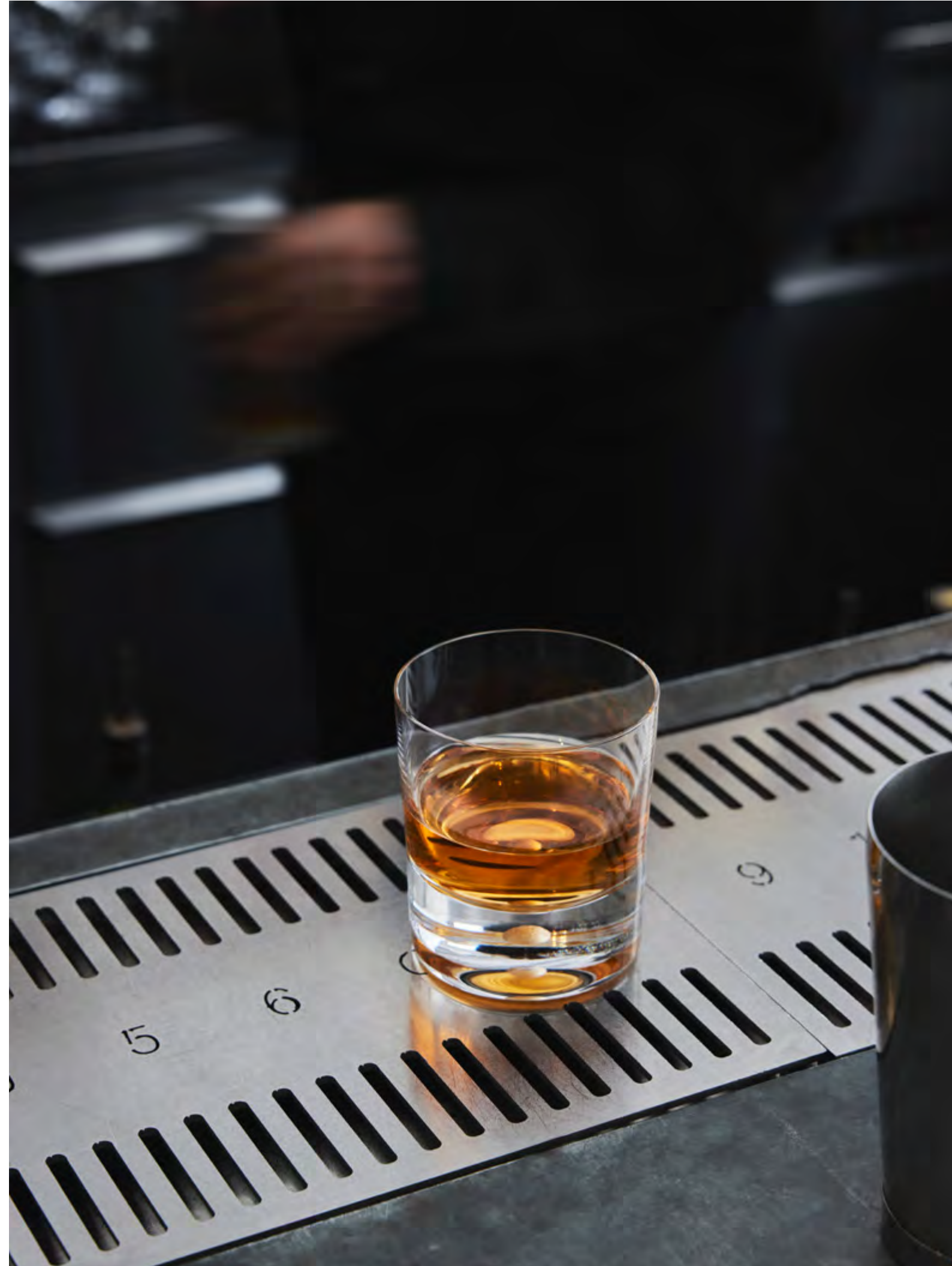
The champagne glass holds 7 oz and is suitable for sparkling beverages, with its tall, slim bowl preserving the bubbles in the drink. Intermezzo Gold is mouth-blown in Kosta, Sweden.

- A celebratory golden edition
- Mouth-Blown in Kosta, Sweden
- The tall, slim bowl preserves the bubbles in the beverage
- Adds a festive elegance



6577494
Intermezzo Gold Champagne 7 oz
H 9.9" W 2.6"
Set of 2
\$200

Assets



Assets





100

ORREFORS  CELEBRATING 100 YEARS IN THE US





Claesson Koivisto Rune

About the designer

Claesson Koivisto Rune is a Swedish architectural firm founded in 1995 by Mårten Claesson, Eero Koivisto, and Ola Rune – all of whom studied at one of Sweden’s most prestigious art and design universities. Over time, they have come to work broadly with architecture and design, and they have, in various interior design projects, created furniture and buildings such as the interior for Inde/Jacobs Gallery in Marfa, Texas. They have also designed products for more than 80 international brands, such as Studio TK and Fontana Arte.

During the years, Claesson Koivisto Rune has won over 60 awards and distinctions, including Designer of the Year and Best Seating from Elle Deco Italia 2014, Furniture of the Year from Elle Deco Sweden 2012, and Designer of the Year from Elle Deco Sweden 2011. They also received the Prince Eugen Medal for outstanding artistic achievement in architecture from King Carl XVI Gustaf of Sweden in 2020.

Previous collections by the designer



Ebon

Click for product video

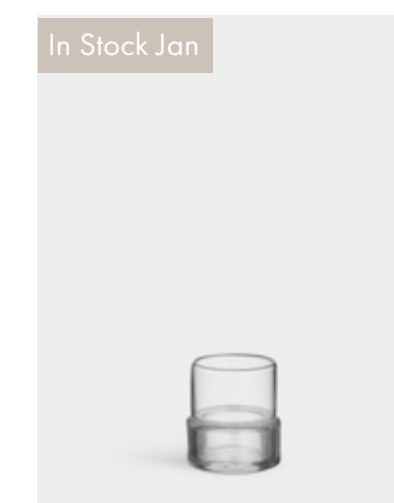
Tou

Design Claesson Koivisto Rune

Tou presents an established design in a new shape. Inspired by the classic hurricane lamp, the designers have divided Tou into two components: a foundation in thicker glass and a tall, thin-glass cylinder placed inside. The different layers and thicknesses reflect the room and the candlelight in a way that makes the eye linger. Set the table with Tou both outdoors and indoors. The candles are easy to light when you take off the top. And with the tall glass in place, the flame burns quietly, even in an evening breeze.

Tou is available in three sizes: a smaller one for regular tealights (1.5 inches), a medium size for large tealights (2.3 inches), and a large storm lantern for pillar candles or stick candles (a functional metal holder is included).

- A minimalistic and elegant design
- Allows to separate the top from the bottom to create a new product
- The versatile hurricane lamp includes a metal holder for candlesticks
- Perfect for both indoor and outdoor use



NEW 6540862
Tou Small
Clear
H 2.8" W 2.6"
\$50



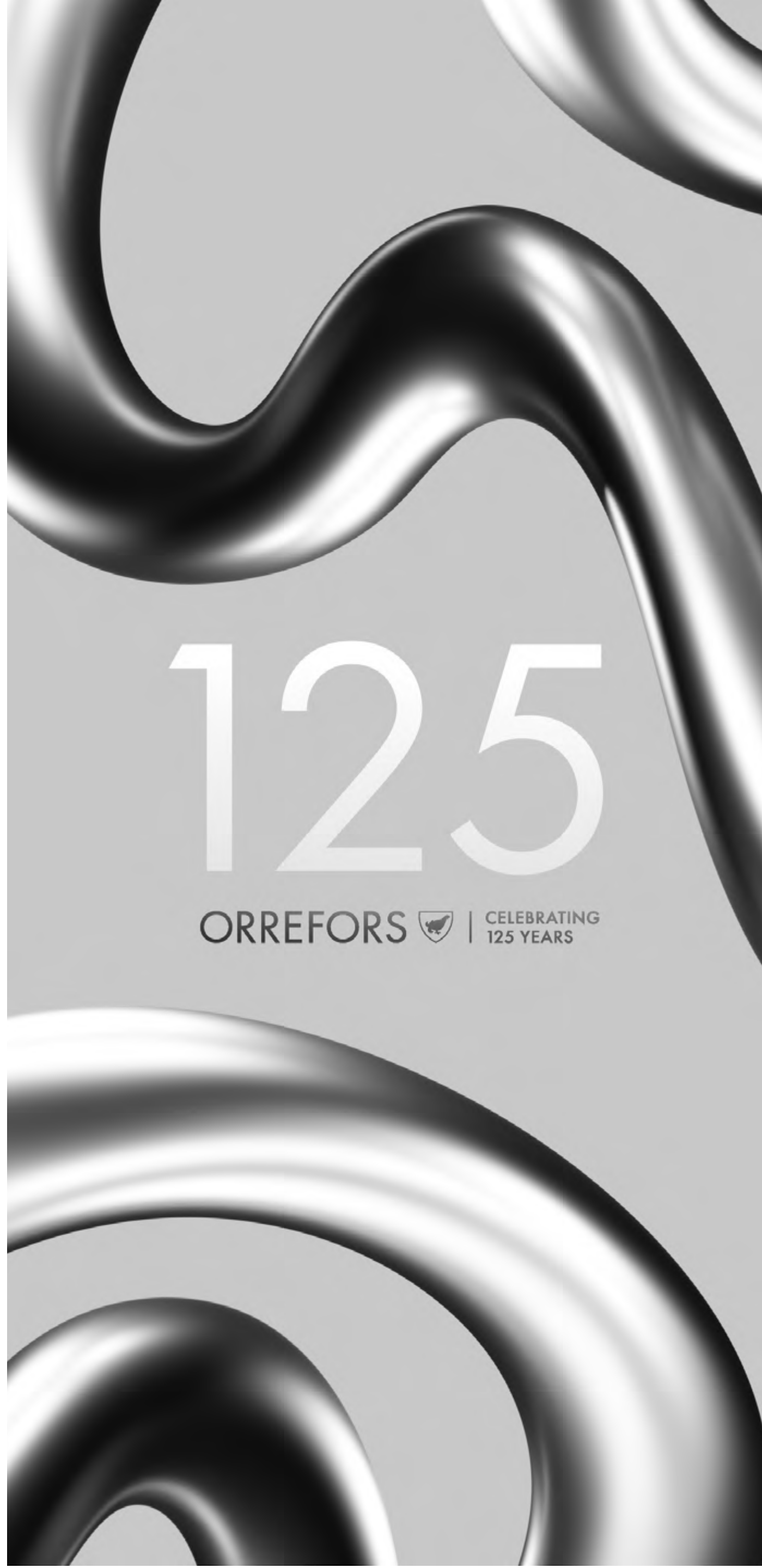
NEW 6540863
Tou Medium
Clear
H 3.3" W 3.4"
\$60



NEW 6540864
Tou Hurricane Lamp
Clear
H 11.4" W 5.1"
\$250

Assets





125

ORREFORS | CELEBRATING 125 YEARS





Lena Bergström

About the designer

Lena Bergström (born in Umeå in 1961) studied design in Japan, Finland, Belgium and England and has a master's degree in textiles from the University of Arts, Crafts & Design in Stockholm. She began working as a designer for Orrefors in 1994 while continuing to develop in her role as a textile designer for Klässbols, Design House and Designer's Eye, among others.

In addition to product design, Lena Bergström has carried out and contributed to several interior design projects, such as Villa Björkholmen's Crystal Bar in Stockholm, the crystal reception desk at Clarion Hotel Post in Gothenburg, and the Swedish Embassy in Tokyo.

Previous collections by the designer



Puck



Sarek



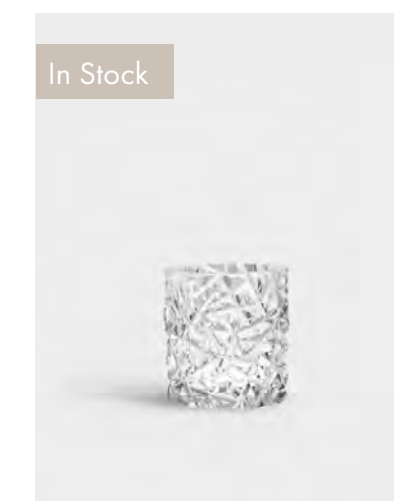
Pluto

Carat

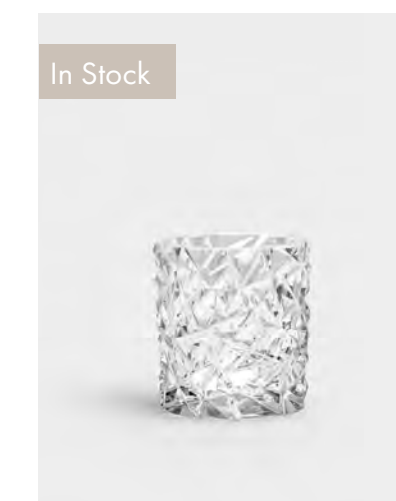
Design Lena Bergström

With the Carat collection, Lena Bergström diverges from the traditional ideals of cut glass. Instead she has carved out a contemporary style in which chaos and order unite to elevate the most beautiful aspects of both. This broad collection includes everything from vases, candlesticks and votives to a bowl, plate, small plate and wine glasses.

- A modern take on the cut crystal
- An expansion of our best-selling collection
- Designed by our top designer Lena Bergström



NEW 6590171
Carat Candle Holder Small
H 3.2" W 3.3"



NEW 6590172
Carat Candle Holder Medium
H 3.7" W 3.4"

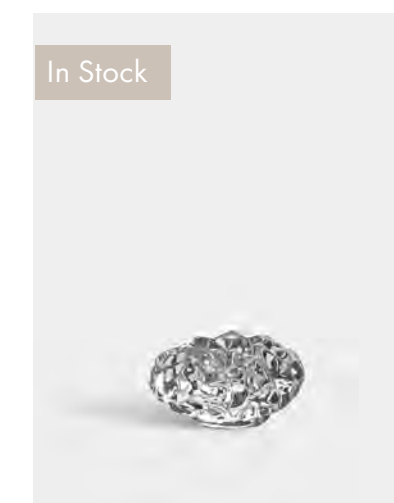


Carat

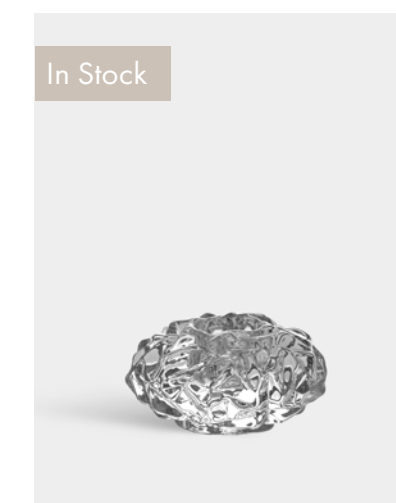
Design Lena Bergström

With the Carat collection, Lena Bergström diverges from the traditional ideals of cut glass. Instead she has carved out a contemporary style in which chaos and order unite to elevate the most beautiful aspects of both. This broad collection includes everything from vases, candlesticks and votives to a bowl, plate, small plate and wine glasses.

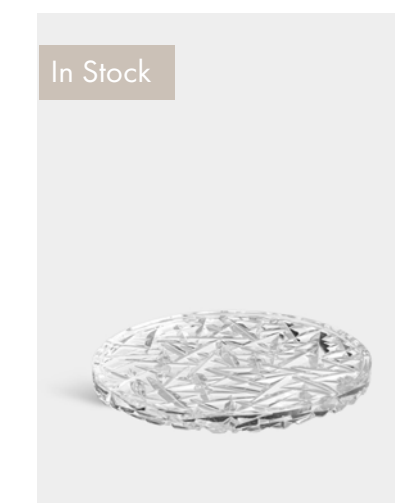
- A modern take on the cut crystal
- An expansion of our best-selling collection
- Carat Coaster Large, perfect for a wine bottle or a pillar candle
- Designed by our top designer Lena Bergström



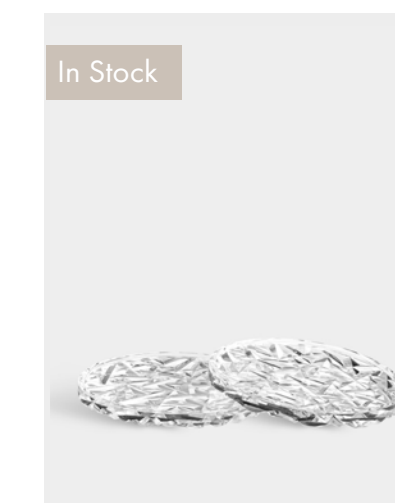
6590161
Carat Votive Small
H 2.0" W 3.8"



6590163
Carat Votive Large
H 2.5" W 4.8"



6590105
Carat Coaster Large
H 0.4" W 5.0"

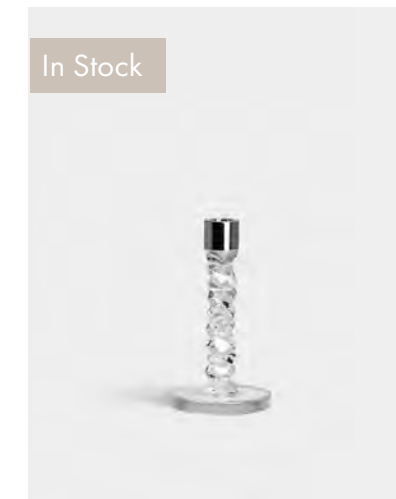


6590103
Carat Coaster Small
H 0.3" W 4.0"
Set of 2

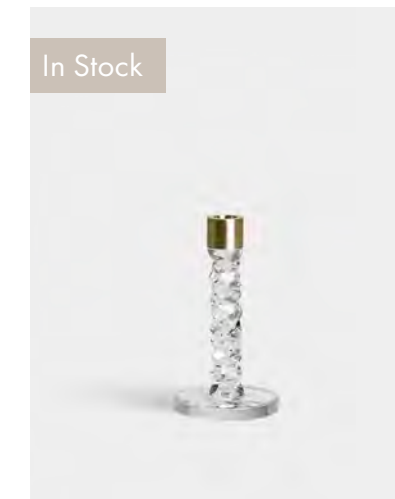


Carat

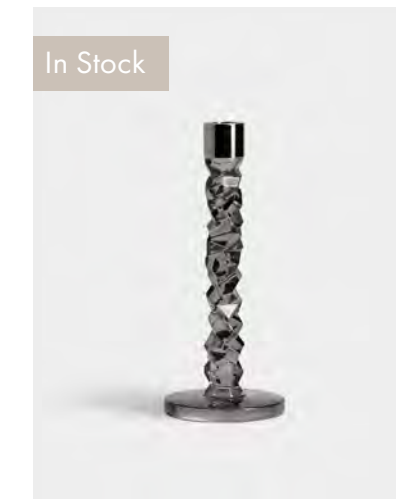
Design Lena Bergström



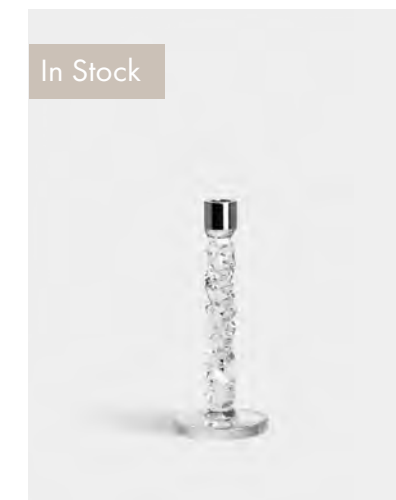
6719396
Carat Candlestick Small
Stainless Steel
H 7.2" W 4.0"
Set of 2



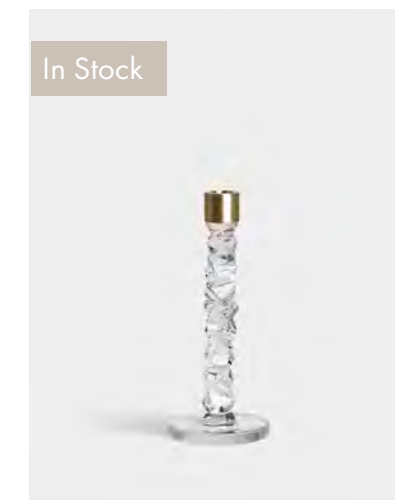
6719895
Carat Candlestick Small
Brass
H 7.2" W 4.0"
Set of 2



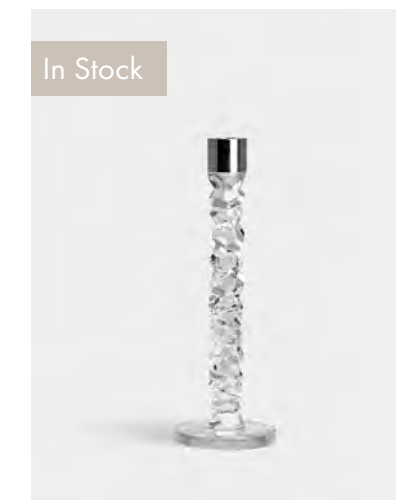
6590170
Carat Candlestick Graphite Medium
Stainless Steel
H 9.6" W 4.0"
Set of 2



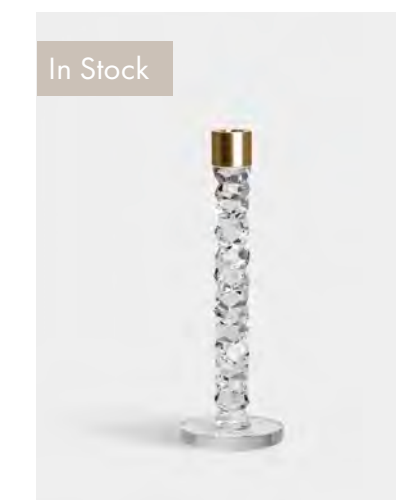
6590162
Carat Candlestick Medium
Stainless Steel
H 9.5" W 4.0"
Set of 2



6590166
Carat Candlestick Medium
Brass
H 9.5" W 4.0"
Set of 2



6719397
Carat Candlestick Large
Stainless Steel
H 11.6" W 4.1"
Set of 2



6719896
Carat Candlestick Large
Brass
H 11.6" W 4.1"
Set of 2

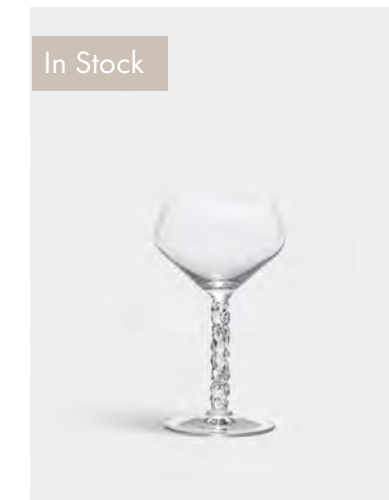


Carat

Design Lena Bergström



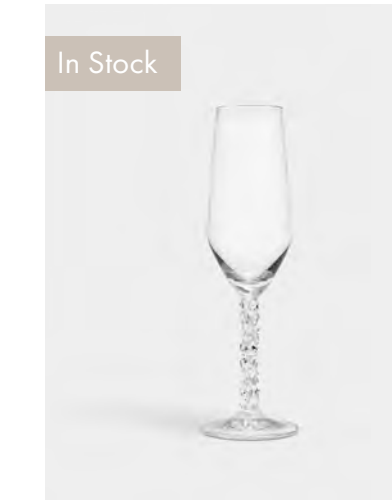
6000024
Carat 3 Piece Gift Set



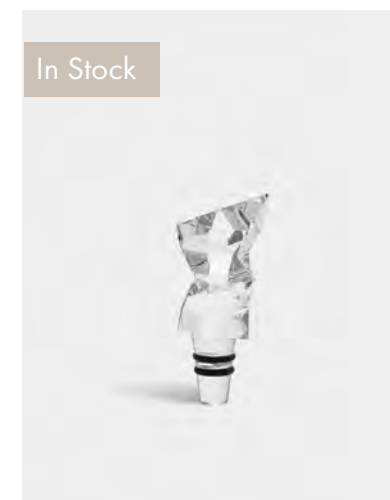
6590108
Carat Coupe 8.4 oz
H 6.4" W 3.9"
Set of 2



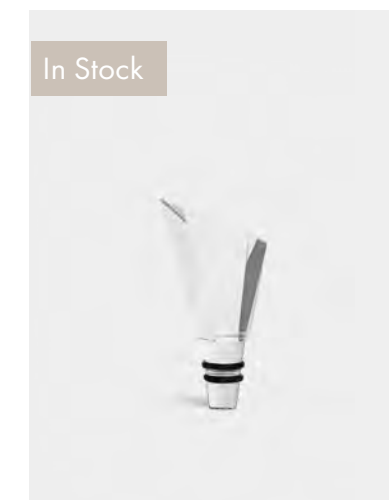
6590109
Carat Wine 14.8 oz
H 8.5 W 3.4"
Set of 2



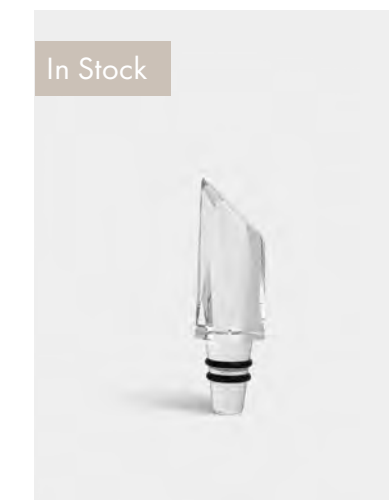
6590100
Carat Champagne 8 oz
H 9.0" W 2.8"
Set of 2



6590191
Carat City Stopper Tokyo
H 4.0" W 1.4"



6590192
Carat City Stopper Stockholm
H 4.0" W 1.5"

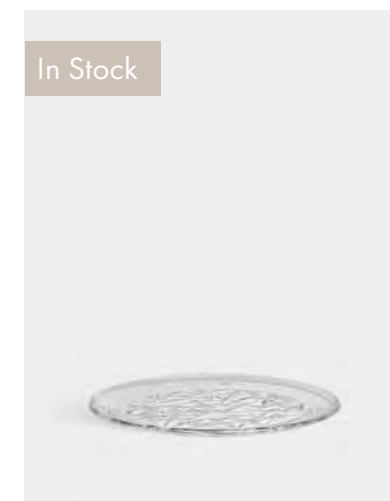


6590193
Carat City Stopper New York
H 4.1" W 1.1"



Carat

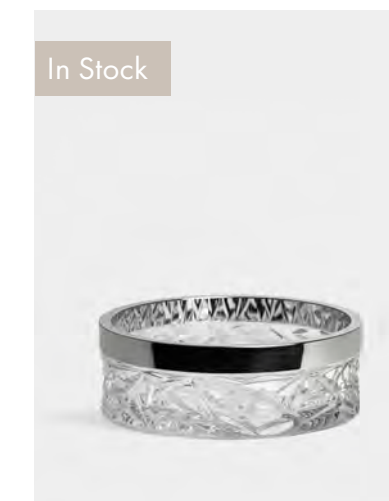
Design Lena Bergström



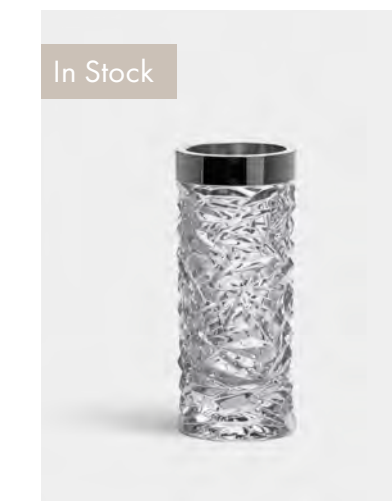
In Stock
6590151
Carat Side Plate
H 7.5"



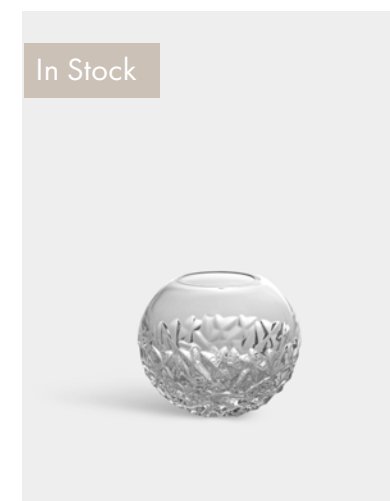
In Stock
6590152
Carat Dinner Plate
H 10.6"



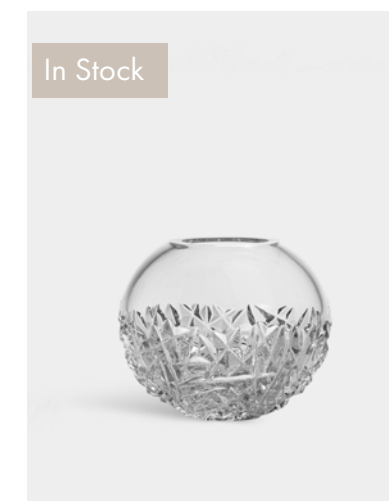
In Stock
6590112
Carat Bowl Silver Rim
H 3.0" W 8.5"



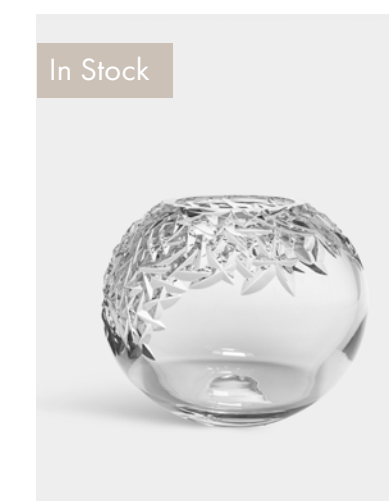
In Stock
6590124
Carat Vase Silver Rim
H 9.4" W 4.0"



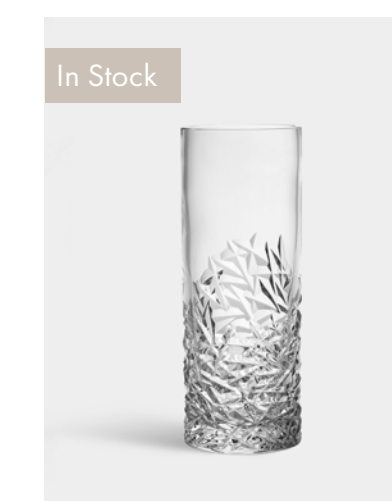
In Stock
6590120
Carat Globe Vase Small
H 4.3" W 4.5"



In Stock
6590125
Carat Globe Vase Large
H 6.6" W 8.0"



In Stock
6590133
Carat Globe Vase XL
H 9.9" W 12.0"



In Stock
6590131
Carat Vase Lower Cut
H 14.5" W 5.5"



In Stock
6590132
Carat Vase Upper Cut
H 14.5" W 5.5"

Imagery

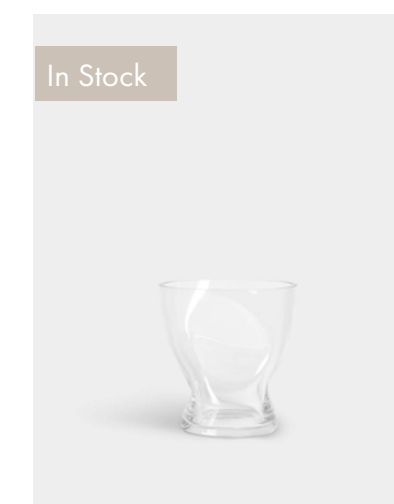




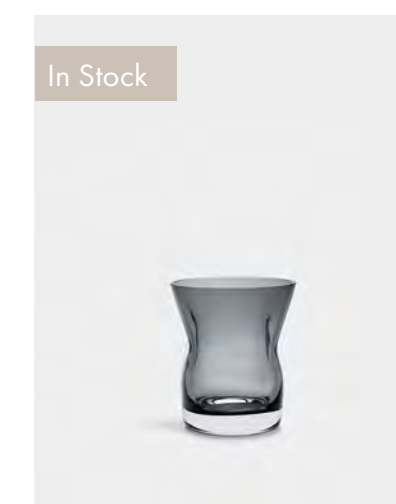
Squeeze

Design Lena Bergström

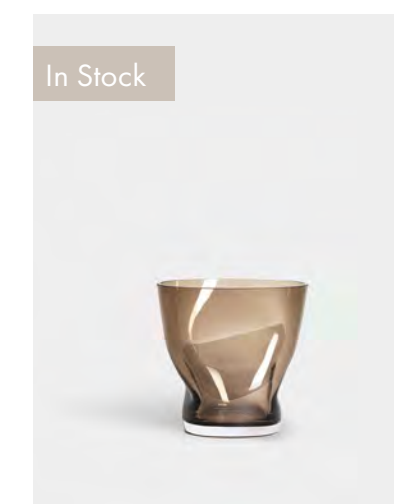
Like many other innovations, the idea for Squeeze arose by chance. While working on another shape entirely, Lena Bergström lost control of the heated, viscous glass, and the result was an asymmetrical inward bend. Inspired by her mistake, Squeeze was born, in which the shape has been intentionally reproduced. The “squeezed” indentations interrupt the symmetry, while simultaneously serving a clear function: flowers placed inside are neatly held together rather than spread out, even those with only a few stems.



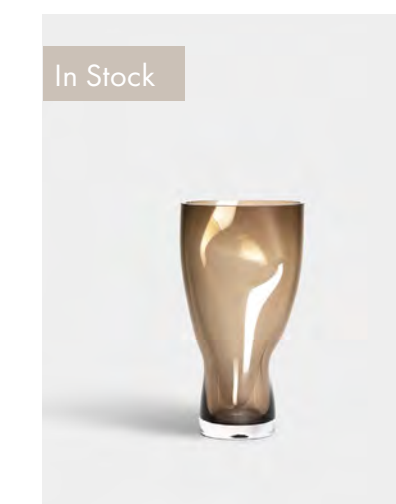
NEW 6562030
Squeeze Tulip Vase
Clear
H 7.1" W 7.1"



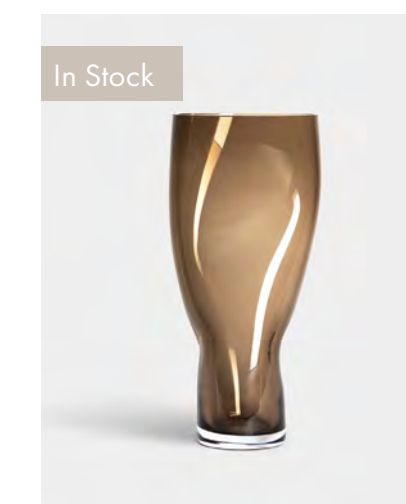
NEW 6562029
Squeeze Tulip Vase
Blue
H 7.1" W 7.1"



NEW 6562031
Squeeze Tulip Vase
Smokey Brown
H 7.1" W 7.1"



NEW 6562026
Squeeze Small Vase
Smokey Brown
H 9.1" W 4.8"



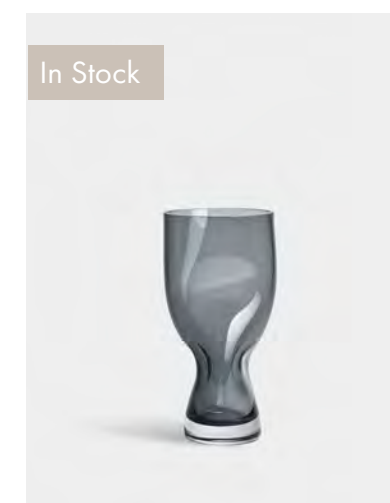
NEW 6562028
Squeeze Large Vase
Smokey Brown
H 13.4" W 5.8"



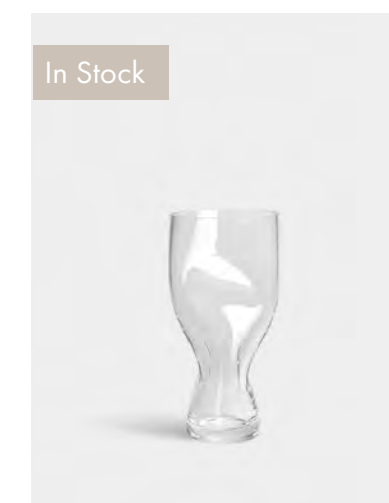
Squeeze

Design Lena Bergström

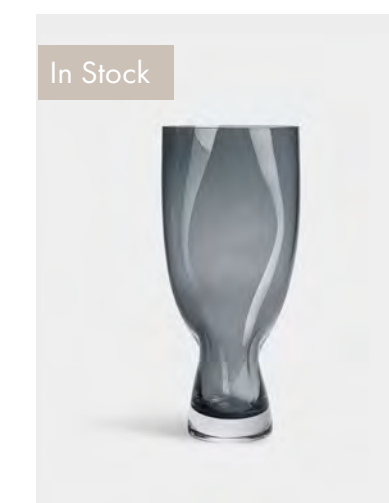
- A functional art object; appealing both with or without flowers
- Modern look for a broad target group
- Handmade and mouth-blown
- A wonderful gift



6562021
Squeeze Small Vase
Blue
H 9.1" W 4.8"



6562022
Squeeze Small Vase
Clear
H 9.1" W 4.8"



6562024
Squeeze Tall Vase
Blue
H 13.4" W 5.8"



6562025
Squeeze Tall Vase
Clear
H 13.4" W 5.8"

Imagery





Erika Lagerbielke

About the designer

Erika Lagerbielke (born 1960) studied at the University of Arts, Crafts & Design in Stockholm with a focus on industrial design. She is a professor of design at Linnaeus University, where she works with education and research in areas including the artefacts and culture of the meal, dining environments as generators of value, and the sustainable development of glass.

Lagerbielke began her collaboration with Orrefors in 1982, during her studies at the University of Arts, Crafts & Design, and had her major breakthrough with the Intermezzo series already in 1984. Her most acclaimed special projects include the wedding gift to Crown Princess Victoria and Prince Daniel Westling from the Swedish Parliament and government in 2010, Linnaeus University's vice-chancellor chain in 2010, Hook of Sigrid for the Diocese of Växjö in 2011, and a special set for Michelin restaurant Operakällaren in Stockholm in 2020.

Previous collections by the designer



Intermezzo



Enjoy



Metropol



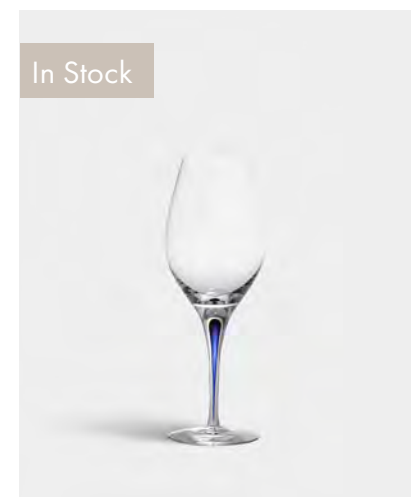
More

Intermezzo – Line extension

Design Erika Lagerbielke

Orrefor's most popular collection by Erika Lagerbielke, the beautiful Intermezzo, is now extended to a set of 2. Sealed into the glass, rising up from the surface of the table, is a teardrop-shaped mystery. A small, but characteristic detail fascinating enough to inspire a conversation at any time. It has been doing just that for decades – Intermezzo is aesthetic sustainability.

- Nr 1 Stemware collection
- Handmade
- Made in Sweden
- Unique technique invented by Orrefors



NEW 6257408
Intermezzo Blue Balance
H 9.0" W 3.0"
Set of 2



Grace

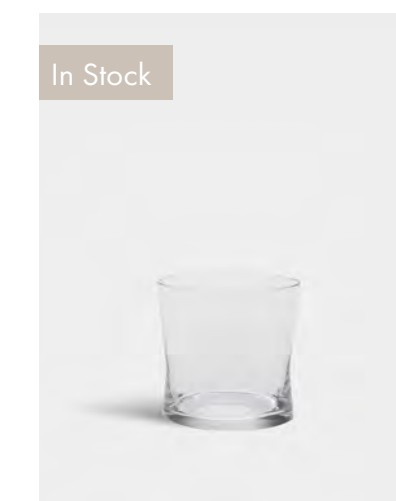
Design Erika Lagerbielke

With Grace from Orrefors, Erika Lagerbielke demonstrates that even barware can have a light and gracious character. Its thin rim is similar to a wine glass, and the classic double cone-shaped glass provide a perfect grip for the hand. The collection consists of an Old Fashioned glass, a Double Old Fashioned glass and a Highball glass. They are perfect for traditional alcoholic beverages or contemporary cocktails and aperitifs with intriguing taste experiences of fruit juice, kombucha, herbs and other non-alcoholic ingredients..

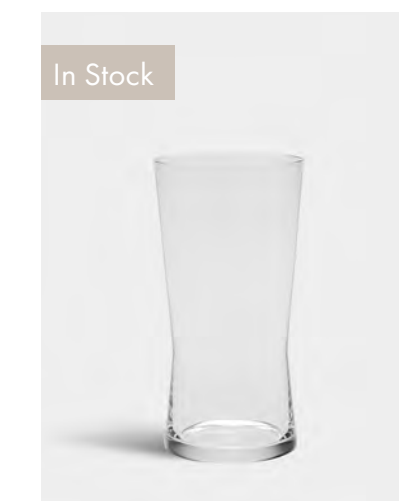
- Created by our top stemware designer
- A unique but contemporary design
- All-purpose drinkware



NEW 6540610
Grace OF 32 oz
H 3.5" W 6.7"
Set of 2



NEW 6540611
Grace DOF 39 oz
H 3.6" W 7.1"
Set of 2



NEW 6540612
Grace Highball
H 6.0" W 6.1"
Set of 2

Imagery





Gunnar Cyrén

About the designer

Gunnar Cyrén (1931–2013) was a Swedish glass artist, silversmith and industrial designer. He studied in the metal department at the University of Arts, Crafts & Design (Konstfack) in Stockholm.

Cyrén was hired at Orrefors glassworks in 1959, and became head of design ten years later. His major works for Orrefors include the Pop Glass collection from the 60s, and the glasses in the Nobel set, which he designed for the Nobel Banquet in 1991. The glasses are still used at the annual banquet and are still available in Orrefors assortment.

He won numerous distinctions, including the Swedish Royal Scholarship, the Lunning Prize and the Prince Eugen Medal. In 1992, he was awarded the title of professor by the Swedish government.

Previous collections by the designer



Sofiero



Nobel



Helena

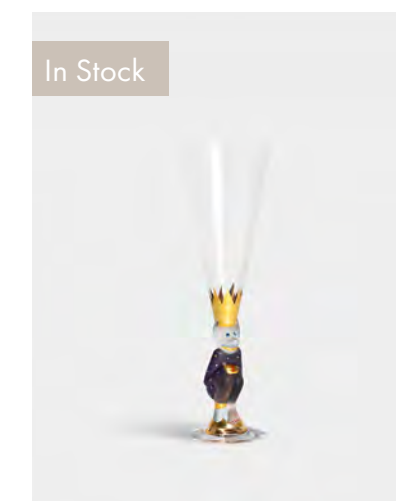


The Sparkling Devil

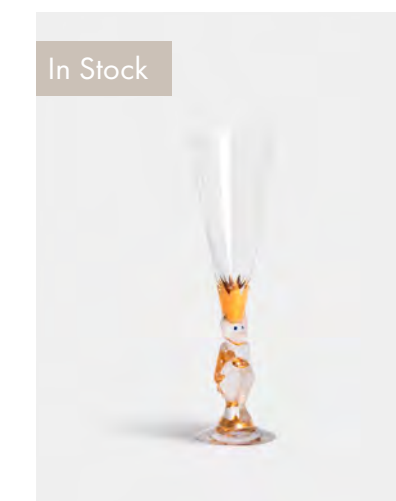
Design Gunnar Cyrén

After Gunnar Cyrén's passing in 2013, the designer's sons went through the sketches he left behind. They found sketches of a champagne glass inspired by the "Snaps Devil" glass from the Nobel collection. The champagne glass, called Sparkling Devil, went into production and is now part of the Orrefors assortment. The item is mouth-blown in Sweden and each glass is hand-painted with details in real 22-carat gold. The collection is available in several color variations and a new color will be added annually until the collection is complete.

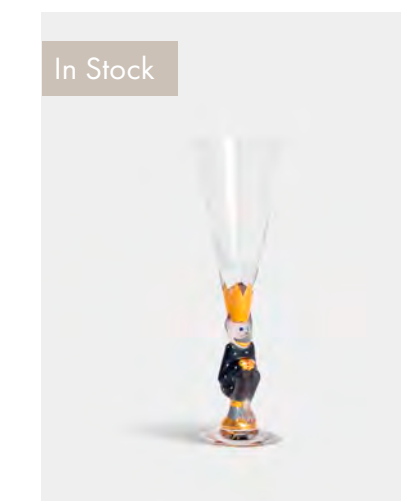
- Handmade in Sweden
- Hand-painted with 22-carat gold
- An exclusive champagne glass inspired by the Nobel collection



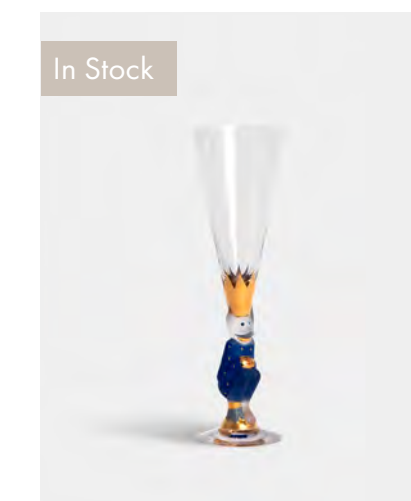
NEW 6267945
The Sparkling Devil
Purple
H 9.1" W 2.8"



6267940
The Sparkling Devil
Clear
H 9.1" W 2.8"

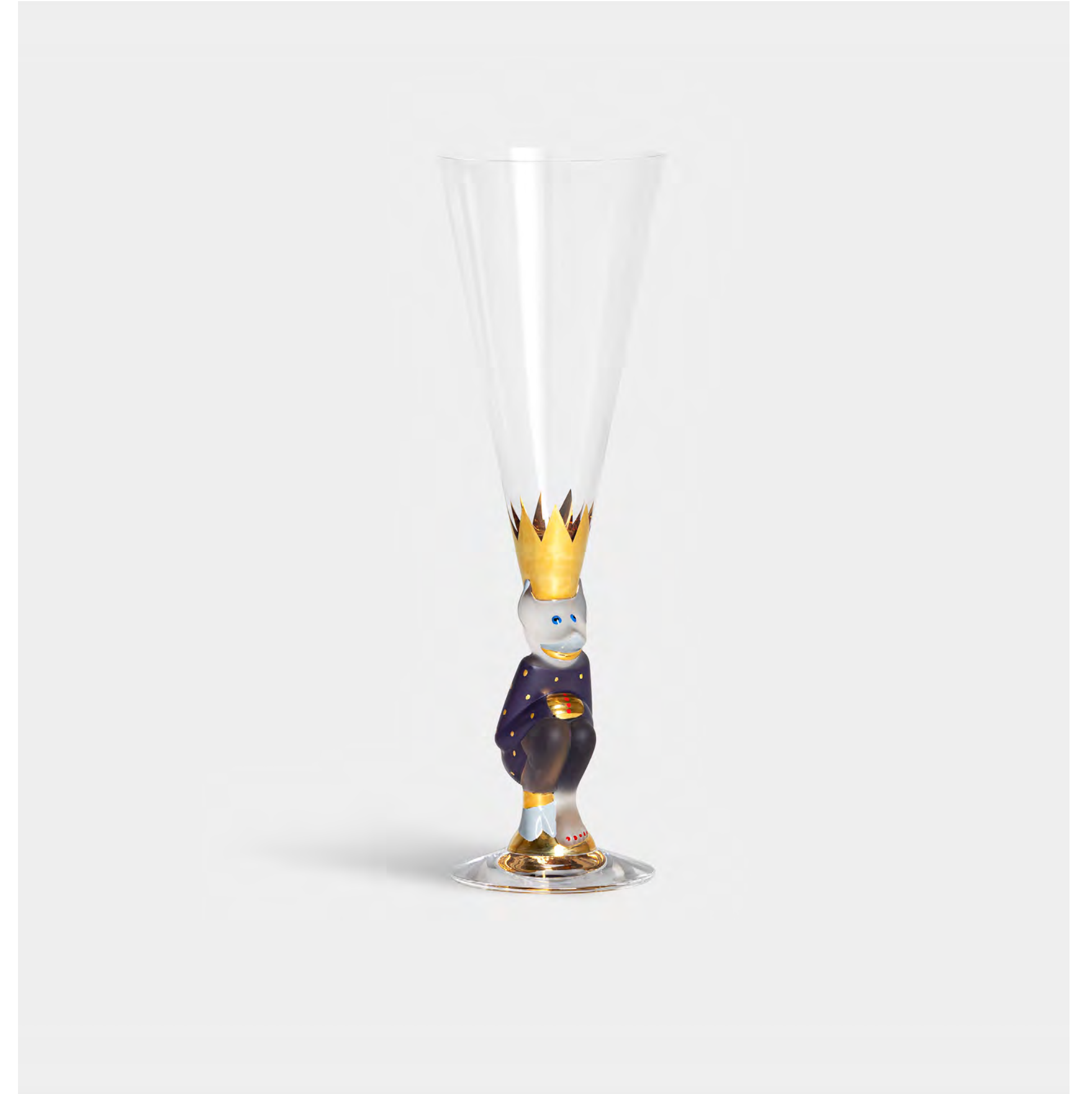


6267941
The Sparkling Devil
Grey
H 9.1" W 2.8"



6267942
The Sparkling Devil
Blue
H 9.1" W 2.8"

Imagery





Lena Bergström

About the designer

Lena Bergström (born in Umeå in 1961) studied design in Japan, Finland, Belgium and England and has a master's degree in textiles from the University of Arts, Crafts & Design in Stockholm. She began working as a designer for Orrefors in 1994 while continuing to develop in her role as a textile designer for Klässbols, Design House and Designer's Eye, among others.

In addition to product design, Lena Bergström has carried out and contributed to several interior design projects, such as Villa Björkholmen's Crystal Bar in Stockholm, the crystal reception desk at Clarion Hotel Post in Gothenburg, and the Swedish Embassy in Tokyo.

Previous collections by the designer



Puck



Squeeze



Sarek



Pluto



Carat

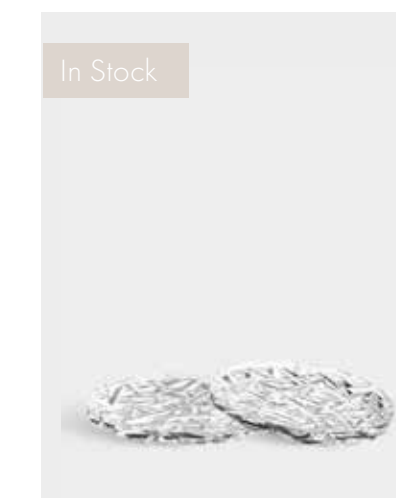
Design Lena Bergström

With the Carat collection, Lena Bergström diverges from the traditional ideals of cut glass. Instead, she has carved out a contemporary style in which chaos and order unite to elevate the most beautiful aspects of both. This broad collection includes everything from vases, candlesticks and votives to a bowl, plate, small plate and wine glasses.

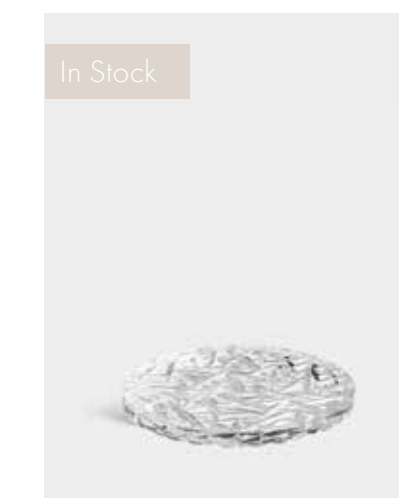
- A modern take on the cut crystal
- An expansion of our best-selling collection
- Carat Coaster Large, perfect for a wine bottle or a pillar candle
- Designed by our top designer Lena Bergström



NEW 6590170
Carat Candlestick Graphite
H 9.53" W 3.94"
2-pack



NEW 6590103
Carat Coaster
H 0.3" W 3.94"
2-pack



NEW 6590105
Carat Coaster Large
H 0.35" W 4.92"

Imagery





Ingegerd Råman

About the designer

Ingegerd Råman (born in Stockholm in 1943) studied at Carl Malmsten's Capellagården, Öland, and at the University of Arts, Crafts & Design in Stockholm. She also studied ceramic chemistry at the Istituto Statale d'Arte per la Ceramica in Faenza, Italy. In 1967, she started her own ceramics studio in Skåne and throughout her career, she has worked as both a ceramics and glass designer. Råman worked for several distinguished Swedish glassworks before she began collaborating with Orrefors in the late 1990s. Today she is among the designers with the greatest significance for the development of Orrefors, and her elegant style continues to be an objective for the future.

Previous collections by the designer



Pond



Cut In Number (Checker)



Pulse



Lumiere

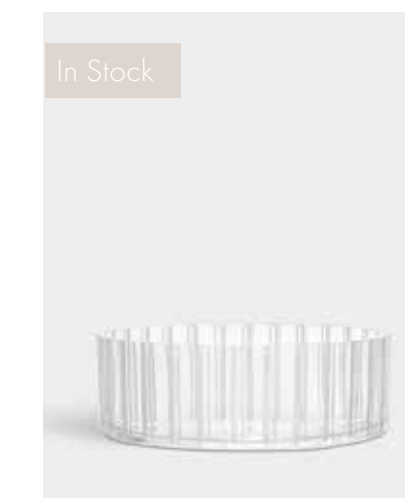


Cut In Number

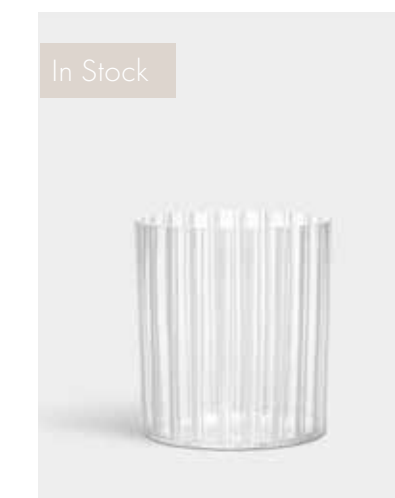
Design Ingegerd Råman

With Cut In Number, Ingegerd Råman has applied Orrefors' extensive tradition of cut glass as starting point. She has stepped away from the tradition of polished cuts, leaving the cuts matte instead, which emphasizes the geometrical surface of the clear glass. Cut In Number consists of three cylindrical objects: a bowl and two vases, which all come with two different cut patterns. When the light meets the crystal and the carefully positioned lines, it becomes clear that mathematics also can be poetic.

- Functional interior design objects for the minimalist home
- Status symbol for design connoisseurs
- New addition to already successful collection
- Simple and timeless, typical of Råman's aesthetic



NEW 6552533
Cut In Number Stripes
Bowl
H 3.74" W 10.83"



NEW 6552524
Cut In Number Stripes
Medium Vase
H 7.87" W 7.28"



NEW 6552525
Cut In Number Stripes
Large Vase
H 13" W 4.65"

Imagery





Erika Lagerbielke

About the designer

Erika Lagerbielke (born 1960) studied at the University of Arts, Crafts & Design in Stockholm with a focus on industrial design. She is a professor of design at Linnaeus University, where she works with education and research in areas including the artefacts and culture of the meal, dining environments as generators of value, and the sustainable development of glass.

Lagerbielke began her collaboration with Orrefors in 1982, during her studies at the University of Arts, Crafts & Design, and had her major breakthrough with the Intermezzo series already in 1984. Her most acclaimed special projects include the wedding gift to Crown Princess Victoria and Prince Daniel Westling from the Swedish Parliament and government in 2010, Linnaeus University's vice-chancellor chain in 2010, Hook of Sigrid for the Diocese of Växjö in 2011, and a special set for Michelin restaurant Operakällaren in Stockholm in 2020.

Previous collections by the designer



Intermezzo



Enjoy



Metropol



More



Difference

Design Erika Lagerbielke

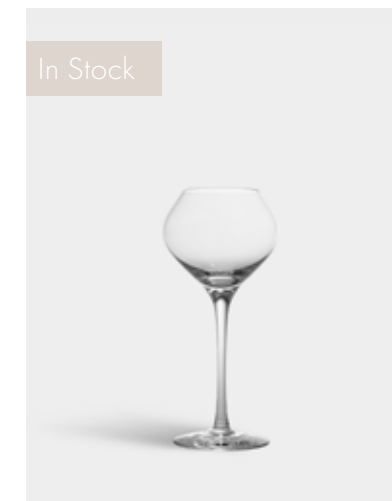
Difference is designed with a fresh, unique perspective for the eyes. Here, the flavor experience is as essential as enjoyment for the eye and hand. Erika Lagerbielke consulted one of Sweden's leading sommeliers for help. Together, they explored the relationship between the shape of the glass and the experience of the flavor, aroma and color of the drink inside. The glasses in the Difference collection are based not on the grape from which the wine is made, but on the characteristics of the drink: Crisp, Fruit, Mature, Primeur, Sparkling or Sweet. This allows conversations over a Difference glass to be less about preconceived notions – and more about what's most important: your wine-tasting experience.

- Each glass is made for a specific aroma
- Created by our top stemware designer
- Developed in collaboration with renowned sommelier
- Designed for the perfect drinking experience
- Handmade in Sweden

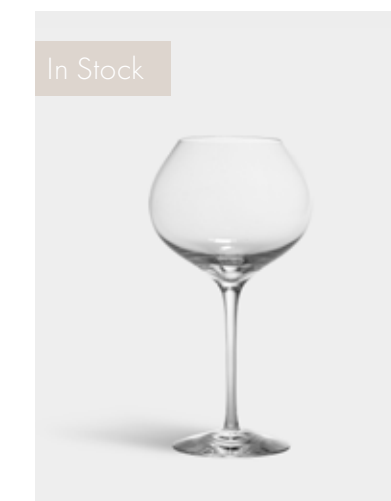


Difference

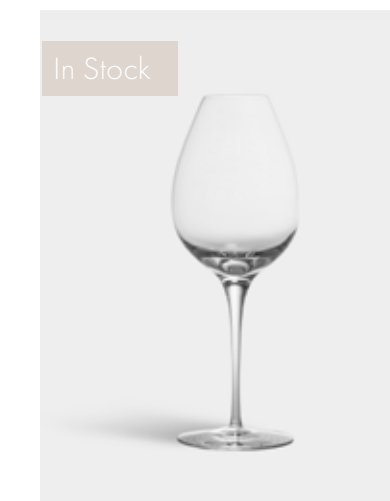
Design Erika Lagerbielke



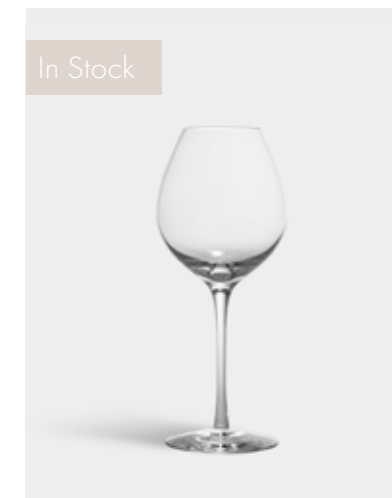
NEW 6719977
Difference Sweet 7.5oz
H 7.1" x W 3.15"
2-pack



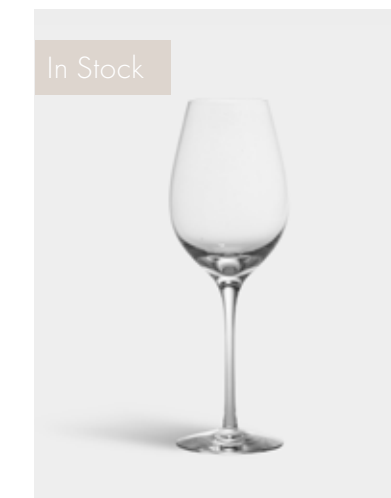
NEW 6719967
Difference Mature 22oz
H 8.86" W 4.72"
2-pack



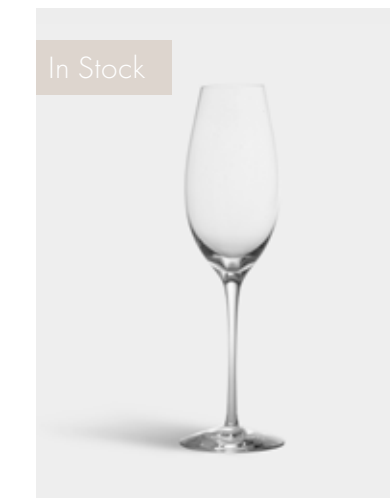
NEW 6719966
Difference Primeur 21oz
H 9.84" W 3.94"
2-pack



NEW 6719968
Difference Fruit 15oz
H 8.86" W 3.62"
2-pack



NEW 6719969
Difference Crisp 15oz
H 9.65" W 3.35"
2-pack



NEW 6719970
Difference Sparkling 10oz
H 10.04" W 3.11"
2-pack

Imagery



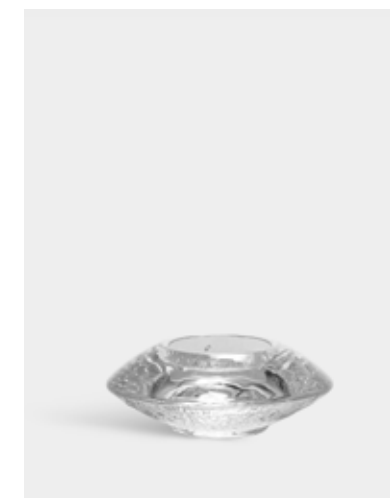
Lars Hellsten

About the designer

Lars Hellsten (born 1933) studied at the University of Arts, Crafts & Design with a focus on sculpture. He was active as a designer at Skruf Glassworks from 1964–1972 and then joined Orrefors glassworks, a collaboration that lasted over 25 years.

Hellsten's work is represented at Nationalmuseum and Nordiska Museet in Stockholm, Småland Museum, Halland Museum of Cultural History, Röhsska Museum in Gothenburg and the Victoria and Albert Museum in London.

Previous collections by the designer



Discus

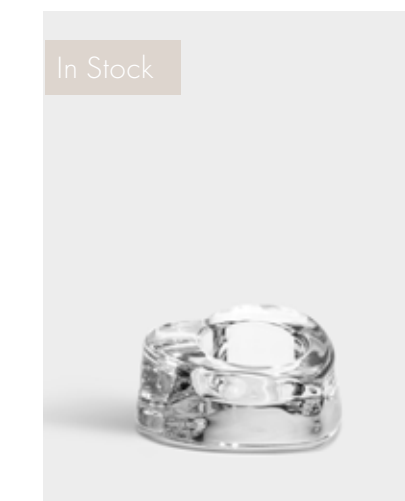


My Heart Votive

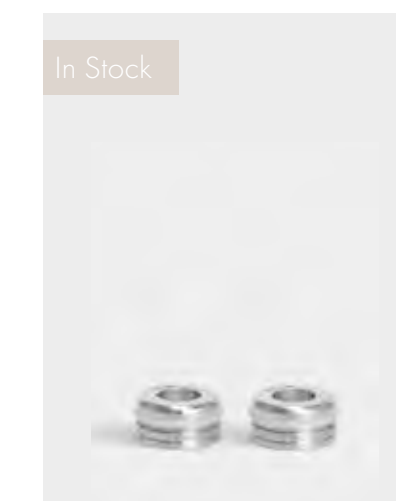
Design Lars Hellsten

This votive which was designed by Lars Hellsten is shaped like a heart – the universal symbol of care, warmth and love. My Heart votive made of thick, crystal-clear glass has a round hole, allowing the candle to sink down precisely so the flame is visible through the glass.

- Elegant Simplicity
- Showcases the clarity of the crystal
- For candle sticks, use with Orrefors Lightswitch



NEW 6518462
My Heart Votive
H 0.98" W 2.99"



6528401
Lightswitch Votive Adapter
H 0.75" W 1.69"
2-pack

Imagery





Martti Rytönen

About the designer

Martti Rytönen (born 1960) grew up in North Karelia, Finland. He studied at the University of Arts, Crafts & Design in Stockholm with a focus on glass and ceramics.

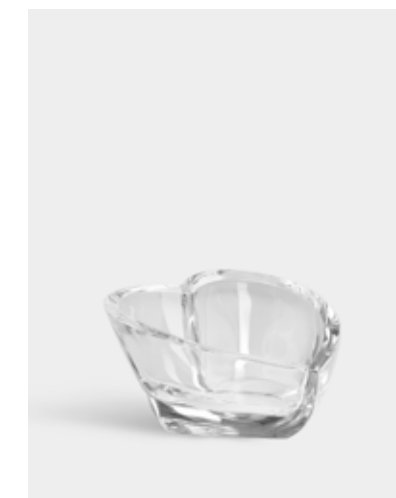
Rytönen came to Orrefors as an Orrefors scholarship recipient in 1994, and then continued working for the brand. He is particularly known for his graphic effects and the designs he creates by cutting, blasting and engraving.

His work is represented at the Nationalmuseum in Stockholm, Röhsska Museum in Gothenburg and Småland Museum in Växjö.

Previous collections by the designer



Peak



Valentino



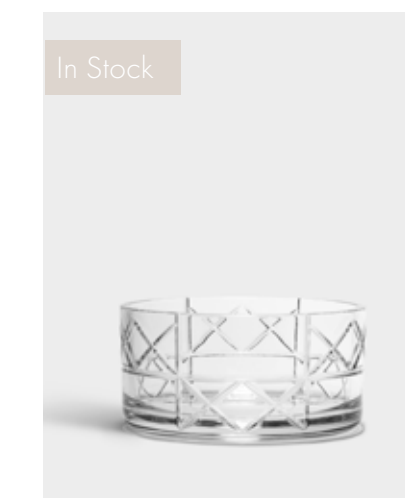
City

Explicit

Design Martti Rytönen

Deep cuts paired with an austere, modern pattern give Explicit a distinctive character. Designed by Martti Rytönen, the pattern is inspired by dried reeds after winter, growing close to the water by the shore. The collection, which launched in 2015, consists of vases and bowls in different sizes and patterns.

- New addition to popular collection
- Brings an elegant touch to your floral arrangements
- A wonderful centerpiece
- Ideal for gift giving

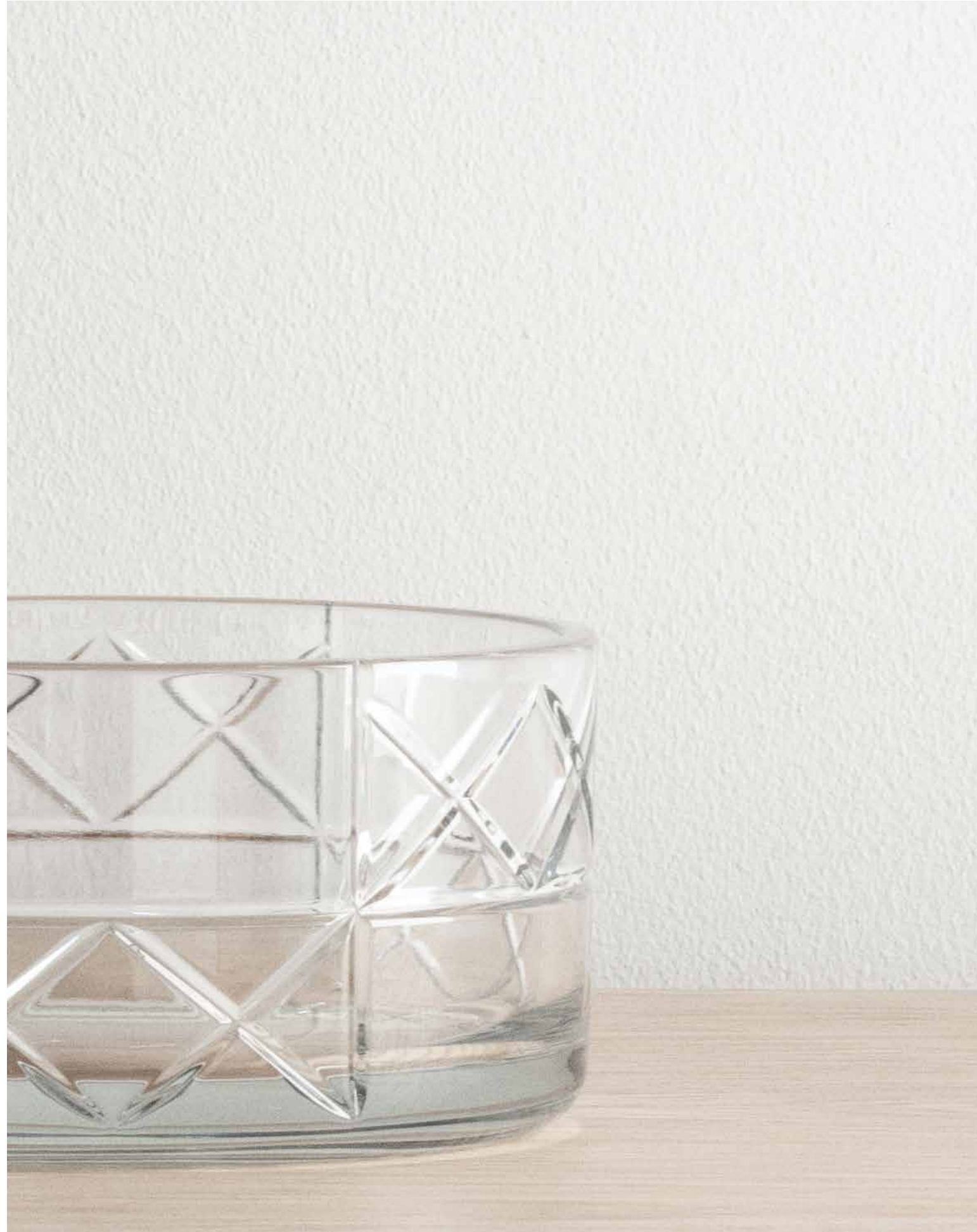


NEW 6320811
Explicit Bowl Checks
H 4.33" W 8.78"



NEW 6320824
Explicit Vase Checks
H 12.52" W 5.08"

Imagery



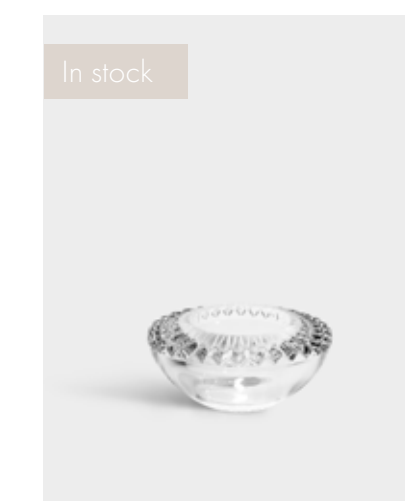


Brilliance

Orrefors Designs

Brilliance is a votive designed by Orrefors with intricate cut patterns of angular facets which reflects the light. Add this votive to complete the set table or to implement an elegant style in the home. The collection launched in 2021.

- Add warmth and elegancy to any setting
- A lasting gift idea
- Contemporary design



6301362 NEW
Brilliance Votive
H 2.00" W 4.00"

NEW ARRIVALS





CARAT

Design Lena Bergström · 2009

With inspiration from jewels and gemstones Lena Bergström has renewed the cut crystal with the collection Carat. Carat has become one of Orrefors' most beloved with its unique, romantic and contemporary expression. There are different stemware glasses in the collection bringing a sense of luxury to the set table.

- A modern take on the cut crystal
- Expansion of our best-selling product series
- Perfect for special occasions, brings a luxurious feeling to the event
- Made with lead-free crystal
- Dishwasher safe



NEW 6590153
Carat side plates 2-pack
0.55in x 7.48 in.
Clear



NEW 6000024
Carat 3 Piece Gift Set
Set Includes 2 Carat Champagne Flutes
and 1 Carat Small Vase



NEW 6590108
Carat coupe 2-pack
H 6.42in x W 3.82 in. 8.4 oz.
Clear



NEW 6590109
Carat wine 2-pack
H 8.46in x W 3.35 in. 14.8 oz.
Clear



NEW 6590100
Carat champagne 2-pack
H 9.02in x W 2.76 in. 8 oz.
Clear



INFORMAL

Design Björn Dahlström · 2021

Informal is an elegant and timeless collection of glasses with a focus on functionality and design. It is made to work well in everyday settings as well as for more formal occasions. The idea of Informal was born through a play with the classic wine glass where the ambition was to create a contemporary collection of glasses for different beverages.

- Contemporary Scandinavian design
- Elegantly shaped and thin glass with wide areas of use
- The centerpiece: A carafe in three different colors with bowl included
- Made with lead-free crystal
- Dishwasher safe



NEW 6402707
Informal carafe with bowl
9.29 x 4.06 in. 34 oz.
Black



NEW 6402706
Informal carafe with bowl
9.29 x 4.06 in. 34 oz.
Olive



NEW 6402705
Informal carafe with bowl
9.29 x 4.06 in. 34 oz.
Clear



NEW 6402704
Tumbler 2-pack
3.35 x 2.87 in. 8.5 oz.
Clear



NEW 6402702
Small glass 2-pack
6.3 x 2.91 in. 9.5 oz.
Clear



NEW 6402703
Large glass 2-pack
6.89 x 3.15 in. 12 oz.
Clear



NEW 6402701
Champagne 2-pack
7.68 x 2.44 in. 7.4 oz.
Clear



CUT IN NUMBER

Design Ingegerd Råman · 2021

The Cut in Number series consists of three cylinders. The reserved shapes are elegantly combined with cut decor in different patterns. Simple and timeless, but with the brilliance and care typical of Råman's aesthetic.

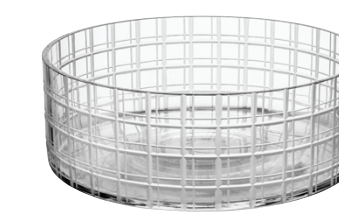
- Functional interior design objects for the minimalist home
- Status symbol for design connoisseurs
- Simple and timeless, typical of Råman's aesthetic
- Designed in Sweden
- Machine cut



NEW 6552527
Vase checkers
13 x 4.65 in.
Clear



NEW 6552526
Vase checkers
7.87 x 7.28 in.
Clear



NEW 6552534
Bowl checkers
3.74 x 10.83 in.
Clear



POND

Design Ingegerd Råman · 2002

Pond is named after the pond in Orrefors, outside of Ingegerd's studio window. With a soft oval shape, Ingegerd Råman compares the dishes in different sizes to rings emerging on the water from a cast pebble. The simple shape and spare palette in gray and clear glass give the dishes an understated certitude. The timeless design combines beauty and function in the perfect balance.

- Perfect for serving food
- Easy for storage since all bowls stack
- Beauty and functionality in one collection
- Designed in Sweden
- Dishwasher safe



NEW 6554470
Pond plate
1.18 x 5.39 in.
Grey



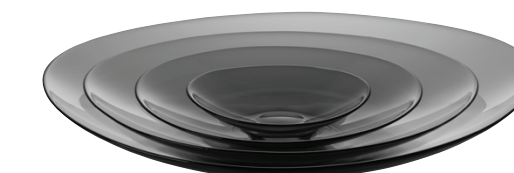
NEW 6554472
Pond plate
1.38 x 8.35 in.
Grey



NEW 6554474
Pond plate
1.89 x 11.42 in.
Grey



NEW 6554475
Pond plate
2.56 x 14.29 in.
Grey



NEW 6554401
Pond plate giftset
Grey



LUMIERE

Design Ingegerd Råman · 2021

With her restrained style, Ingegerd Råman has given the Less candlestick a contemporary, minimalist look. The cylindrical glass rod is combined with an extremely large base and a glossy, silver metal candle holder.

“This candlestick stands out for its incredibly pared-down precision. There is beauty where the glass and metal materials converge. A candle flame brings confidence as darkness falls.” – Ingegerd Råman

- Scandinavian minimalist design
- Chrome detail around the base and holder
- Beautiful clean details allow the candlestick to be arranged
- Designed in Sweden



NEW 6298864
Lumiere candlestick 2PK
10.43 x 4.13 in.
Clear







BLOOM

Design Lisa Hilland · 2018

It is a universal truth that opposites attract and create harmony. Hot and cold, soft and hard, black and white. One needs the other to be whole. When designer Lisa Hilland was asked to design a vase for Orrefors, something that would be equally beautiful without flowers, she chose to use metal for contrast beside the exclusive crystal. Bloom is inspired by the organic shapes of nature, by flowers and leaves.

The new arrival to the series this year is a tall vase for cut flowers, a vase which can also be used for dried flowers or a simple branch from the garden. Like the short vase, this vase is equally beautiful with a lush bouquet or a simple ivy clipping. The vases are also lovely in their own right, with only the light playing in the crystal glass.

- A stainless steel structure holds the flowers in place to create exciting floral arrangements
- Combine tall and short vases for intriguing groupings
- Beautiful with lush floral arrangements or one single stem
- Unique design



NEW 6400026
Bloom Vase High
11.18 x 9.06 in



6400025
Bloom Vase
4.9 x 9.1 in.

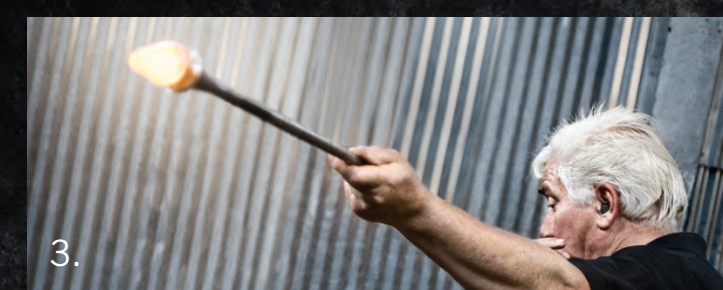
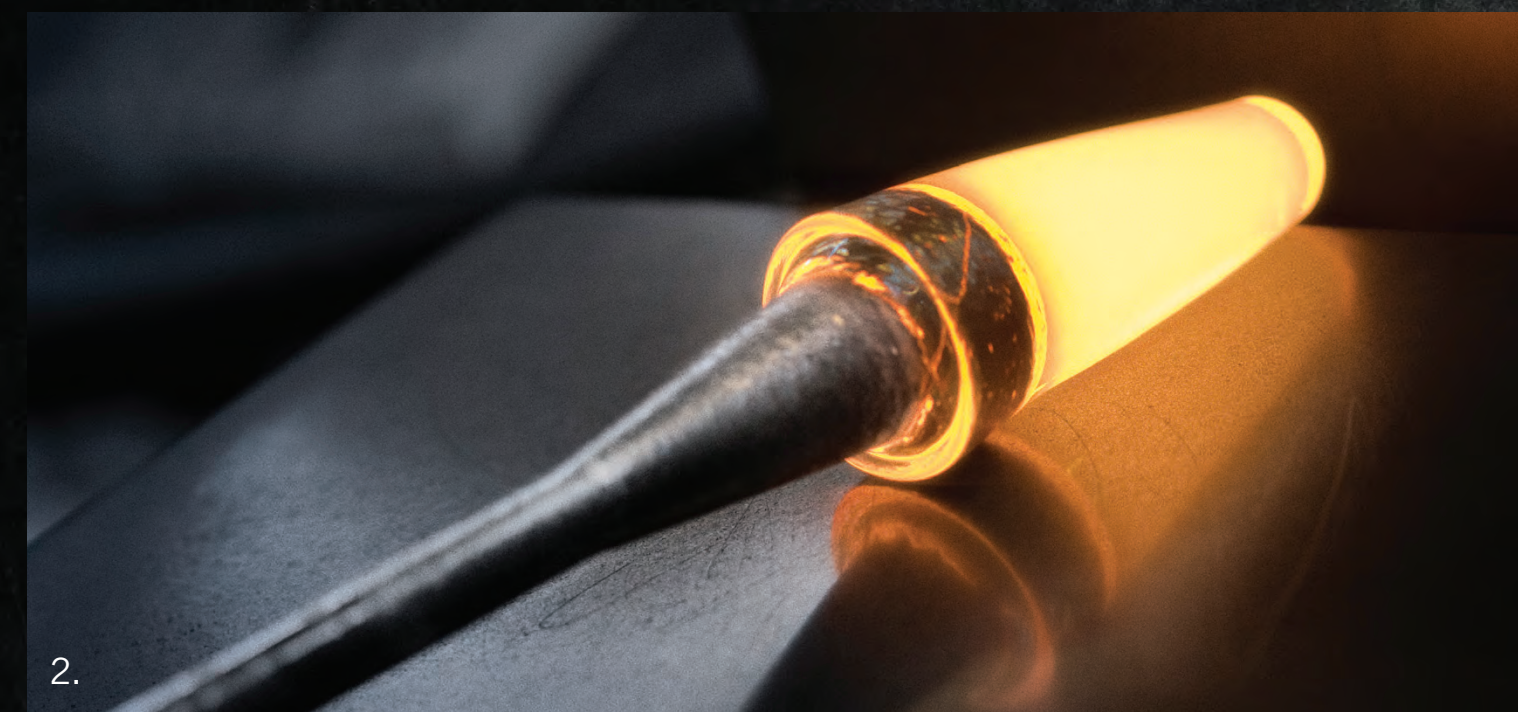


A UNIQUE CRAFT

The transformation of glass from a hot, syrupy mass to a piece of glittering crystal is a spectacular process that takes place in the Småland hot shops every day of the week.

Although glass has been made for well over a thousand years, the techniques used today remain almost identical to those used many centuries ago. To make the glasses for a dinner set, the glassblowers work in teams, or chairs, consisting of six or seven people, each possessing the requisite specialist skills.

1. The molten glass, or metal, is first gathered on the blowing iron. It is essential to gather the right amount of metal – not too much, not too little, but just enough for the bowl and stem of the glass-to-be.

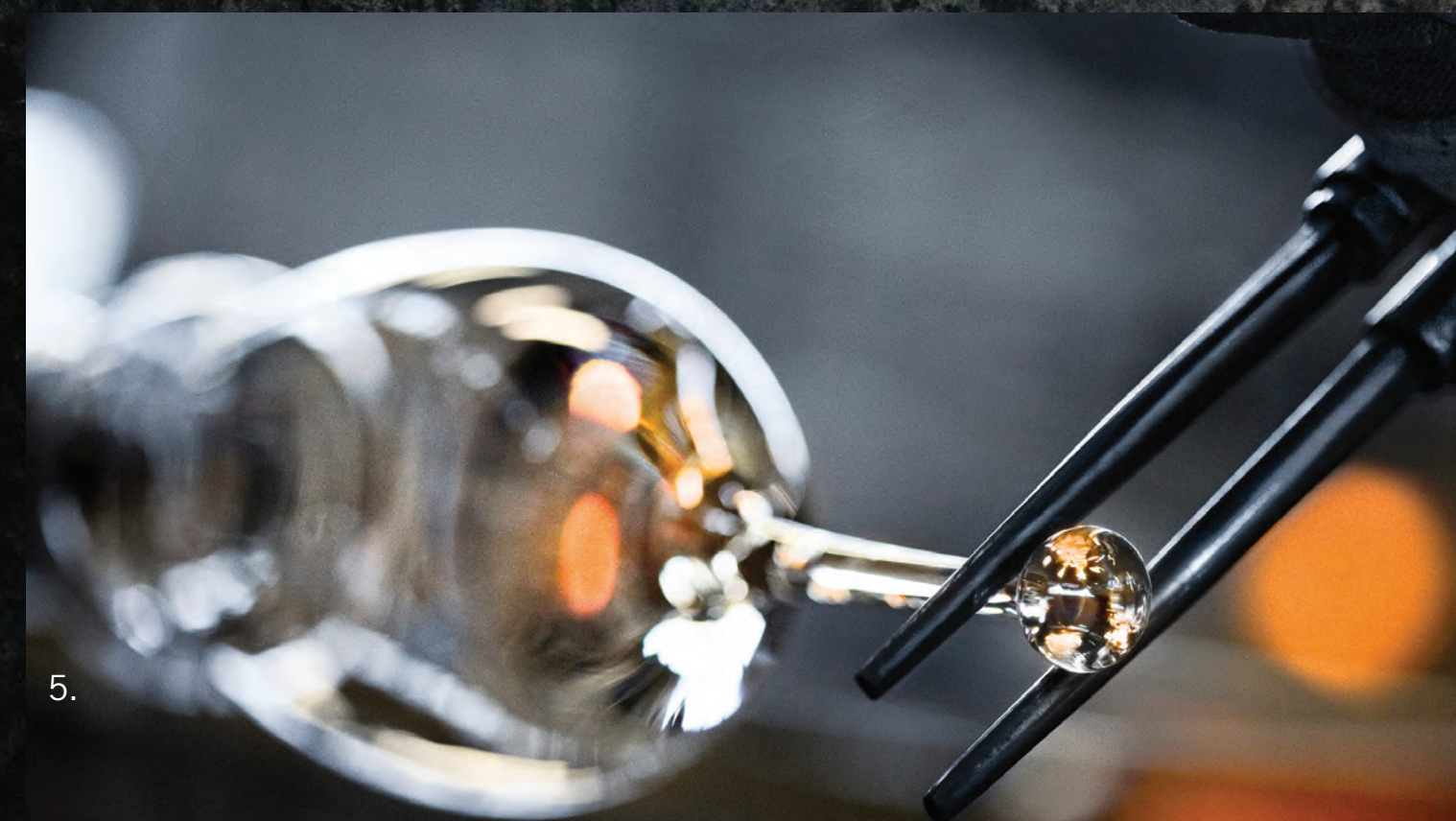


2. The glass is rolled on a marver.

3. The gatherer blows air into the metal and hands the iron to the blower.

4. The blower blows the cup into shape in a graphite mould.

5. The blowing iron is next passed to the master-blower, who draws out and shapes the stem.





6.



6.

6. The glass moves on to the deputy master blower, who adds more glass and, using a clapper, fashions the foot of the glass.



7.

7. The assistant knocks the glass off the blowpipe using a special holder known as a carry-in-fork. The glass is then fetched by a carrier, who places it in a lehr, where it is slowly cooled. After cooling, an initial quality assurance check is carried out by a sorter. If the glass is deemed to comply with Orrefors' stringent quality standards, it is sent for further processing.

8. First the upper part of the bowl is cracked off.

9. Then the sharp edge is carefully ground and polished. Finally, the edge of the bowl is heated until it melts and is softly rounded.



8.



9.



10.

10. When ready, the glass undergoes final inspection and sorting. Finally, as a guarantee of quality, the finished glass is marked with the Orrefors shield: one is sand-blasted into the bottom of the glass, while a silver label is applied to the foot.

COLLECTIONS



ARGYLE

Design Per Morberg · 2019

The Scottish Highlands have an enchanting appeal. Their austere charm makes us long for good times with old friends, or a quiet evening in front of the fire wrapped up in a tartan blanket. Add a glass of Scottish 'water of life' and you're sure to keep both warm and cozy. Our barware collection ARGYLE is a homage to everything we associate with life in the North Highlands. Designed for you to enjoy your favorite drink, it has a combination of sandblast and cuts that creates a classic tartan pattern in crystal.



6200040
Old Fashioned (2-Pack)
3.6 x 3.1 in. 9 oz.



6200041
Double Old Fashioned (2-Pack)
3.6 x 3.4 in. 13.5 oz.



6200036
Highball (2-Pack)
5.9 x 2.9 in. 15 oz.

AMOUR

Design Lars Hellsten · 1997

Give from the heart with a heart! Amour is a wonderful tealight holder for every romantic occasion! As delightful to give as to receive. A heart for your mother, a glass heart for your new found friend and naturally, perfect for Valentine's Day.



6500662
Votive
1.8 x 4 in.

CIRRUS

Design Anne Nilsson · 2020



6267063
Candlestick (tall)
11.2 x 7.7 in.



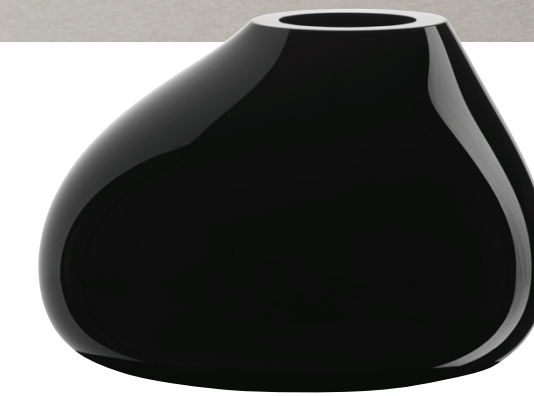
6267062
Candlestick (medium)
7.3 x 7.7 in.

EBON

Design Claesson Koivisto Rune · 2020 · Handmade in Sweden



6720022
Ebon Vase (black, medium)
7.5 x 11.4 in.



6720024
Ebon Vase (black, large)
9.4 x 14.6 in.



6545120
Clonfetti 25W



6545122
Line 25W



6545123
Loop 25W



6545127
Cocoon 25W

LIGHT SHADOW BULBS

Design Orrefors · 2008

MERLOT

Design Erika Lagerbielke · 1995

Merlot's expression is minimalist, contemporary elegance but surprises with its concern for the wine's bouquet and flavor. With its design of a generous opening, the collection has become a favorite for a wide audience worldwide. Merlot, created by the unsurpassed designer of glassware collections, Erika Lagerbielke. Merlot received the Excellent Swedish Design award.



6274216
Wine Small
7.4 x 3 in. 10 oz.

6274218
Wine Medium
8.3 x 3.4 in. 15 oz.

6274220
Wine Large
8.7 x 3.7 in. 20 oz.

6274214
Champagne
9.4 x 3 in. 9.5 oz.

6274259
Beer / Iced Beverage
7.1 x 3.7 in. 20 oz.

6274234
Tumbler
4.5 x 3 in. 8 oz.



THE OFFICIAL NOBEL PRIZE STEMWARE

Orrefors is one of the official suppliers to the Nobel Prize Banquet and Purveyors to the H.M. the King of Sweden. Gunnar Cyrén designed the Nobel series to mark the 90th anniversary of the Nobel Prize Banquet in 1991. Since then, Nobel Laureates and royalties have raised Orrefors Nobel glasses in the toasts at the banquet in Stockholm City Hall in December each year. The series has been praised for its elegance and personal design. Offer your guests an ice-cold martini as an aperitif, serve a little devil with the starter, and let the party begin!



NOBEL

Design Gunnar Cyrén • 1991 • Handmade in Sweden • Hand Painted in 22 Carat Gold



6267914
Champagne
8.7 x 2.3 in. 6 oz.



6267915
Martini/Champagne
4.6 x 4.2 in. 7.8 oz.



6267920
Universal
8.4 x 3.1 in. 12.5 oz.



6267982
Decanter
11.8 x 5.1 in. 40 oz.



6267942
Blue Champagne
9.1 x 2.7 in. 6.5 oz.

THE SPARKLING DEVIL

Design Gunnar Cyrén • 2018 • Handmade • Hand Painted in 22 Carat Gold

Sparkling Devils is a new series of champagne glasses for truly festive occasions. The first ones were a pair that complement each other: Him and her. Yin and Yang. In the coming years, three more family members will be released to complete the series. The new glasses have the same colourful, characteristic appearance as the popular snaps glasses and are real eye-catchers. They are also based on the same glass craft – each glass is mouth-blown in Kosta and hand-painted with 22-carat genuine gold.



6267940
Clear Champagne
9.1 x 2.7 in. 6.5 oz.



6267941
Dark Grey Champagne
9.1 x 2.7 in. 6.5 oz.

PLUTO

Design Lena Bergström · 2019 · Handmade in Sweden



6350162
Candlestick (grey)
4.9 x 6.5 in.



6350062
Candlestick (clear)
4.9 x 6.5 in.



6350262
Candlestick (golden brown)
4.9 x 6.5 in.



6350022
Vase (clear)
7.5 x 9.3 in.



MY HEART VOTIVE

Design Lars Hellsten · 2002

The My Heart Votive radiates love, romance and is the perfect gift to show you care. Celebrate love with a token from the heart.

6518462
My Heart Votive
1.5 x 3.5 in.
\$ 50

SENSE

Design Orrefors · 2015



6220102
Universal 6-Pack
6.8 x 2.8 in. 4 oz.



6220103
Sparkling 6-Pack
8.4 x 2.8 in. 3.5 oz.

LIGHT SWITCH

Design Lena Bergström · 2001

Light Switch is a small aluminium ring, a “candle adapter”, that quickly transforms your votive to a candlestick.



6528401
Candle Adapter (2-Pack)
1.7 in.



SQUEEZE

Design Lena Bergström 2020

Through a creative interaction between Lena Bergström and the glass workers in the cabin, Squeeze was created. The result - a stylish object with a sensual movement and an almost dancing effect. The series was originally launched in 1997 and the same year received the award Excellent Swedish Form. A long-awaited form classic that is now back in the range.



6562025
Vase (clear, large)
13.4 x 5.7 in.



6562021
Vase (blue, small)
9.1 x 4.7 in.



6562022
Vase (clear, small)
9.1 x 4.7 in.



6562024
Vase (blue, large)
13.4 x 5.7 in.

TIMELESS FAVORITES



CRAZY HEART

Design Eeva Attling · 2012

Madly in love! Eeva Attling's Crazy Heart consists of a pair of champagne glasses for newlyweds, people who are newly engaged or newly in love or those who simply want to celebrate love. The glasses are softly rounded and the bowl ends in a deep point that makes the champagne bubbles rise slowly in the glass. A toast to love!

6546901

Flute (2-Pack)
9.5 x 2.8 in. 6 oz.

Limited Edition 300.

WAVE

Design Orrefors · 2014

6719728

Votive 3 Piece Set
3.8 x 7.8 in.



BEER

Design Erika Lagerbielke · 2014



6312001
Taster (4-Pack)
6.6 x 3.3 in. 16 oz.



6312002
Lager (4-Pack)
8 x 3.3 in. 20 oz.



6312003
Pils (4-Pack)
8.5 x 2.7 in. 15.5 oz.



6312007
IPA (4-Pack)
5.9 x 3.3 in. 15.5 oz.

BLOOM

Design Lisa Hilland · 2019

Bloom is inspired by the organic shapes in nature, such as flowers and leaves. It is as perfect holding an exquisite bouquet as it is with a simple branch of ivy, but is also stunning in its own glory when the clear Orrefors crystal catches the light just right.



NEW 6400026
Bloom Vase High
H 11.18 W 9.06 in.
Clear

6400025
Bloom Vase
4.9 x 9.1 in.



CARAT

Design Lena Bergström · 2009

With inspiration from jewels and gemstones Lena Bergström has renewed the cut crystal with the glass series Carat. The sharp and unique asymmetrical grinding reflects our times with a scent of Nordic romance.



6590133
Globe Vase XL
9.8 x 12 in.



6590131
Vase Lower Cut
14.6 x 5.5 in.



6590132
Vase Upper Cut
14.6 x 5.5 in.



6719399
Tumbler (2-Pack)
7.1 x 2.8 in. 11 oz.



6590161
Votive (small)
2 x 3.7 in.



6590163
Votive (large)
2.6 x 4.9 in.



6590112
Bowl
3 x 8.5 in.



6719396
Candlestick
(silver, small, pair)
7.2 x 4 in.



6590162
Candlestick
(silver, medium, pair)
9.5 x 3.9 in.



6719397
Candlestick
(silver, large, pair)
11.7 x 4.1 in.



6719895
Candlestick
(brass, small, pair)
7.2 x 4 in.



6590166
Candlestick
(brass, medium, pair)
9.5 x 3.9 in.



6719896
Candlestick
(brass, large, pair)
11.7 x 4 in.

CARAT (Cont.)
Design Lena Bergström · 2009



6590120
Globe vase (small)
4.3 x 4.5 in.



6590125
Globe vase (large)
6.6 x 7 in.



6590124
Vase
9.4 x 4 in.



6590128
Small Vase
7.1 x 3.6 in.



6590152
Carat Plate
0.8 x 10.6 in.



6590151
Carat Side Plate
0.6 x 7.5 in.

CARAT CITY STOPPERS
Design Lena Bergström · 2009



6590192
Wine Stopper
Stockholm
4.1 x 1.1 in.



6590193
Wine Stopper
New York
4 x 1.5 in.



6590191
Wine Stopper
Tokyo
3.9 x 1.7 in.



6590203
Wine Stopper
Oslo
4 x 1 in.

CELESTE

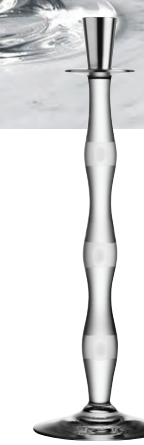
Design Anne Nilsson · 1993 · Handmade in Sweden



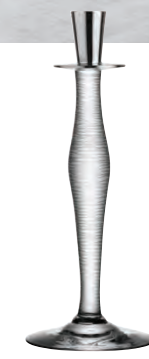
6268568
Candlestick (stripes)
16.1 x 4.7 in.



6268566
Candlestick (bubbles)
13 x 4.3 in.



6268567
Candlestick (cut)
14.6 x 4.5 in.



6268565
Candlestick (lines)
11.4 x 4.1 in.

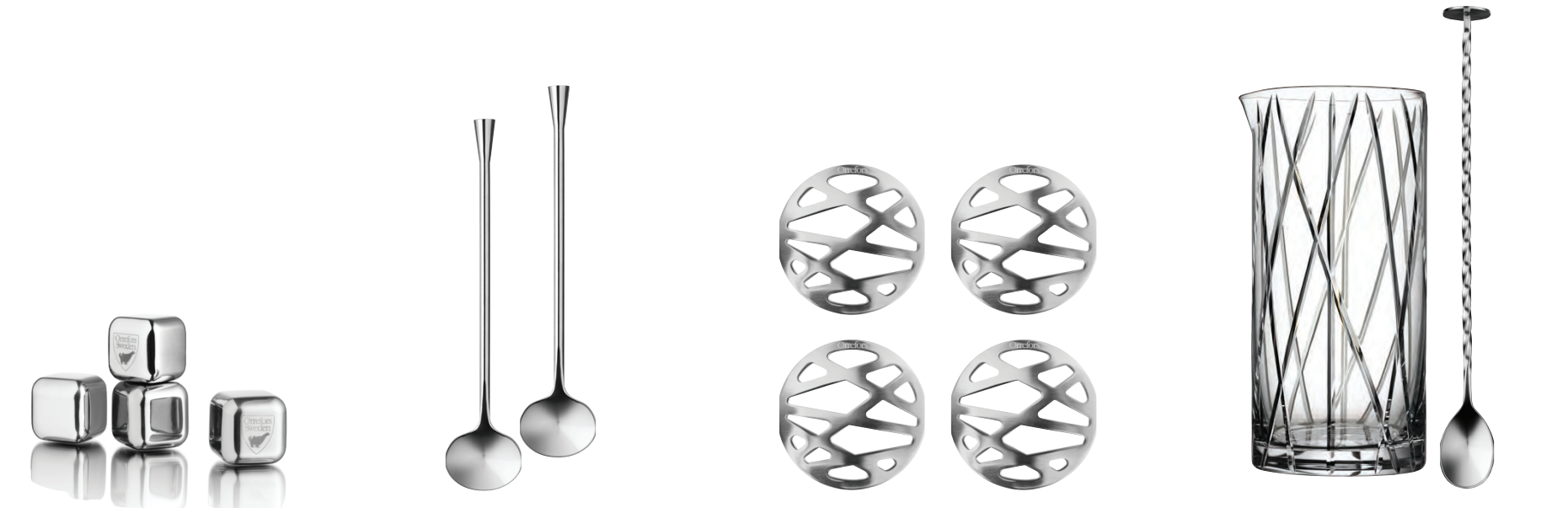
CITY

Design Martti Rytönen · 2016

The CITY barware collection from Orrefors embodies modern, yet classic Orrefors design. Cuts on the surface create a bold and masculine, yet elegant and refined feeling. Urban elegance and beautiful clarity from Orrefors by designer Martti Rytönen.



CITY Design Martti Rytönen · 2016



6310301
Ice Cubes (4-Pack)
1 x 1 in.

6310302
Drink Spoons (2-Pack)
6.7 in.

6310304
Coasters (4-Pack)
0.2 x 3.3 in.

6310393
Mixing Glass with Bar Spoon
6.7 x 3.5 in. 22 oz.



6310342
Shot Glass (2-Pack)
3.3 x 1.6 in.

6310340
Old Fashioned (4-Pack)
3.4 x 3.1 in. 8 oz.

6310341
DOF (4-Pack)
3.6 x 3.4 in. 11 oz.

6310336
Highball (4-Pack)
5.9 x 2.8 in. 12 oz.

63103404 (2-Pack)

63103414 (2-Pack)



6320214
Bowl
4.3 x 6.1 in.

6310397
Ice Bucket
6.1 x 5.4 in.

6310383
Decanter
7.9 x 4.8 in. 32 oz.



DIFFERENCE

Design Erika Lagerbielke · 2002 · Handmade in Sweden



6292120
Primeur Wine
9.8 x 3.9 in. 21 oz.

6292158
Mature Wine
8.7 x 4.7 in. 22 oz.

6292116
Fruit Wine
8.9 x 3.6 in. 15 oz.

6292118
Crisp Wine
9.6 x 3.3 in. 15 oz.

6292114
Sparkling Wine
10 x 3.1 in. 10 oz.



6292185
Decanter
9.1 x 6.2 in. 43.5 oz.



6292186
Decanter Magnum
11.2 x 9.1 in. 100 oz.



DELIGHT

Design Lena Bergström · 2006

6544563
Votive
2.5 x 4 in.

DISCUS

Design Lars Hellsten · 1995



6483163
Votive Gold (large)
1.8 x 5.5 in.



6483167
Votive Gold (small, 2-Pack)
1.7 x 4.4 in.



6483169
Votive Clear (small)
1.7 x 4.4 in.



6483162
Votive Clear (large)
1.8 x 5.5 in.

DIZZY DIAMOND

Design Malin Lindahl · 2005



6298716
Wine
8.9 x 3.3 in. 12 oz.



6298714
Flute
8.9 x 2.4 in. 9 oz.

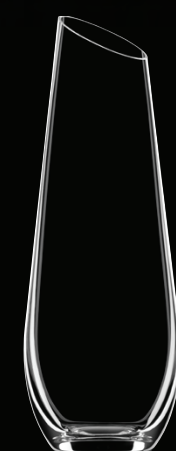
ENJOY

Design Erika Lagerbielke · 2014

Is it possible for a piece of glass to be filled with joy? We think so! The decanter in the Enjoy-series is designed with one single purpose, to enhance your wine experience. The carafe on the other hand, we have created to serve your water in the very best way. No matter if you prefer it au naturel, with bubbles or perhaps with a slice of lemon. That's something worth rejoicing in, isn't it?



6310186
Decanter
9.3 x 7.9 in. 34 oz.



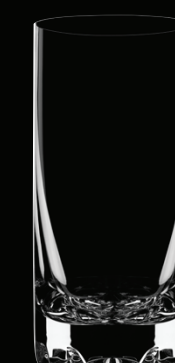
6310185
Carafe
10.4 x 3.7 in. 27 oz.

ERIK

Design Olle Alberius · 2016



6242405
Three Piece Set
(2 DOF & Decanter)
9.3 x 5.3 in. 26 oz.



6242437
Highball
(4-Pack)
5.3 x 2.5 in. 6 oz.



6242402
Double Old Fashioned
(4-Pack)
3.5 x 3.4 in. 12 oz.



6242401
Old Fashioned
(4-Pack)
3.3 x 2.9 in. 11.5 oz.

EXPLICIT
Design Orrefors · 2015



6320711
Bowl (stripes)
4.3 x 8.8 in.



6320811
Bowl (checks)
4.33 x 8.7 in.



6320824
Vase (checks, large)
11.82 x 4.5 in.



6320724
Vase (stripes, large)
11.82 x 4.5 in.

FRAMES
Orrefors Design · 2014



6719741
Diamond (5x7)
10.8 x 8.6 in.



6719745
Plaza (4x6)
6.3 x 8 in.



6719743
Wave (4x6)
6.3 x 8 in.

GIN & TONIC

Orrefors Designs · 2018

Shaken or stirred? Which ever you prefer, gin certainly isn't meant to be on its own. It needs a companion! Mix it and you'll find the botanicals in the gin come to life and bring that zing to the drink. This is why so many classic cocktail drinks call for gin. Strain that cool drink into an elegant, chilled gin & tonic glass, designed to trap the aromas. A roomy glass that does not merely enhance the flavor of the drink – it also allows for plenty of ice to keep the drink cool and slices of fruit for taste and decor. Gin & Tonic is made of high quality, dishwasher safe crystal.



6313001
Glass (4-Pack)
7.9 x 4.2 in. 22 oz.

GLACIAL

Orrefors Design · 2014

Like an iceberg adrift, we see the series Glacial with its four pieces. Sprawling, cool and dangerously beautiful the two vases and bowls mimic the edges of an iceberg as it reaches above the surface. From red hot molten glass into ice cold crystal, at its best.



6320421
Vase
7.5 x 4.8 in.



6320412
Bowl
4.8 x 6.8 in.

GRAPHIC

Design Magnus Forthmeier · 2017

Like an iceberg adrift, we see the series Glacial with its four pieces. Sprawling, cool and dangerously beautiful the two vases and bowls mimic the edges of an iceberg as it reaches above the surface. From red hot molten glass into ice cold crystal, at its best.



6101207
Vase (round, small)
5.2 x 6.1 in.



6101204
Vase (round, medium)
6.8 x 7.9 in.



6101205
Vase (round, large)
8.1 x 9.4 in.



6101203
Vase (cylinder)
11.8 x 4.2 in.



HEART

Orrefors Design · 2015

Bring some love to your decor with this romantic collection of giftware pieces including bowls, vases and a votive. Fill the vases with a special someone's favorite blossom, or fill the bowls with sweets for your sweet!



6719810
Bowl/Votive (small)
2.2 x 5 in.

6719811
Bowl (large)
10 x 4.4 in.

6719813
Vase (large)
10.2 x 4.5 in.

6719814
Bud Vase
8.2 x 3.1 in.

HELENA

Design Gunnar Cyrén · 1977

Designed by Gunnar Cyrén the Helena collection has been a popular, classic pattern that has been part of Orrefors' range since 1977.



6244702
Flute (4-Pack)
9.1 x 3.3 in. 8.5 oz.

HOME FRAGRANCE

Orrefors Design · 2019

Enjoy the lush scents of Orrefors Home Fragrance Collection designed with high-quality formulas, beautiful packaging, complex scents and exceptional quality and design. The Orrefors Home Fragrance Collection uses some of our Best-Selling Double Old Fashion glasses to create the unique candle vessel. All three designs create striking visuals with intoxicating scents to create beautiful candles. The wax is composed of a soy-blend, and the scents bring together multiple notes that will fill any room. Approximate burn time 55 hours.

Scents included are: Blushing Pink, Woodland Vanilla, Warm Amber & Oakmoss.



6719930
Eric Candle
Blushing Pink
3.5 x 3.4 in.

6719931
City Candle
Warm Amber & Oakmoss
3.6 x 3.4 in.

6719932
Peak Candle
Woodland Vanilla
3.6 x 3.6 in.

ICE

Orrefors Design · 2013

The sleek lines in the Ice collection from Orrefors make a sophisticated statement for your powder room or vanity. With expertly cut diagonal lines that create a chic pattern, the ring holder, perfume bottle and covered box make the perfect gift, either on their own or as a complement to the Ice collection.



6719779
Toothbrush Holder
4.3 x 2.3 in.



6719758
Soap Dish
1.2 x 4.8 in.

ICE CUBE

Design Göran Wärff · 2001

The inspiration and name for this charming votive doesn't get any simpler. Ice Cube looks, well, like a king-size ice cube, scooped out with a little hollow for the votive. Fire and ice! Designed by Göran Wärff.



6521862
Votive
2.6 x 2.8 in.

INTERMEZZO

Design Erika Lagerbielke · 1985 · Handmade in Sweden

”The stemware range Intermezzo is about curiosity and love. All my love for the craftsmanship is enclosed in the blue Intermezzo drop. The glasses keep a secret, a mystery that looks like an exclamation sign. The stemware range Intermezzo is one of the first ranges I designed for Orrefors, it was launched in 1985 and turned 30 in 2015. How could I have imagined that Intermezzo would become a much loved classics and one of Orrefors bestsellers of all time, with over 10 million glasses sold worldwide?” – Erika Lagerbielke



INTERMEZZO

Design Erika Lagerbielke · 1985 · Handmade in Sweden



6257403
Coupe
6 x 3.8 in. 12 oz.



6257414
Champagne Flute
9.8 x 2.6 in. 7 oz.



6257416
White Wine
7.9 x 2.4 in. 6 oz.



6257418
Claret
8.7 x 2.8 in. 8 oz.



6257459
Iced Beverage
7.7 x 3.3 in. 15 oz.

6257401 (2-Pack)



6257455
Martini
6.7 x 4.4 in. 7 oz.



6257405
Snaps
5.9 x 2.1 in. 2 oz.



6257419
Wine
9 x 3 in. 14 oz.



6257460
Aroma
9.3 x 4.1 in. 20 oz.



6257461
Bouquet
8.7 x 4.5 in. 20 oz.

6257406 (2-Pack)



6257440
Old Fashioned / Whiskey
3.5 x 3.2 in. 8 oz.



6257441
DOF
3.9 x 3.7 in. 11 oz.



6257432
Tumbler / Juice (small)
4.3 x 2.7 in. 9 oz.



6257436
Tumbler
5.9 x 3 in. 13 oz.



6257485
Carafe
12 x 3.8 in. 37 oz.

6719821 (2-Pack)

6257477 (2-Pack)

6719825 (2-Pack)

6257478 (2-Pack)

LEGEND

Orrefors Design · 2013

With the series Legend, Orrefors takes its classic and timeless crystal into a more modern era. With its straight shapes and silhouettes the Legend bowls breath of modernism while at the same time flirting with tradition and history. Together the shape and patterns create a classic, timeless yet modern, crystal bowl.



6320011
Bowl (checked, small)
3 x 4.3 in.



6320111
Bowl (squared, small)
2.9 x 4.3 in.



6320013
Bowl (checked, large)
4.3 x 6.1 in.



6320213
Bowl (leaves, large)
4.3 x 6.1 in.



6320113
Bowl (squared, large)
4.3 x 6.1 in.

MINGUS

Design Vicke Lindstrand · 1934 · Handmade in Sweden

We at Orrefors are proud to still be making and selling Vicke Lindstrand's martini pitcher Mingus. Mouth-blown in Småland since 1934. A design classic that has won several design awards.



6119395
Martini Pitcher
5.7 x 8.7 in. 50 oz.
\$ 350

METROPOL

Design Erika Lagerbielke · 2017 · Handmade in Sweden

Good things in life are for sharing! Like that great drinking experience, which gets even better when enjoyed with friends. Designed with the modern home and stylish socializing in mind, Metropol is adorned with a hint of black color and a distinct edge, looking sharp and bang on urban chic!



6410004
Tumbler (2-Pack)
4.3 x 3 in. 8 oz.



6410001
Champagne (2-Pack)
9.3 x 3 in. 9 oz.



6410005
Beer (2-Pack)
8.3 x 3.1 in. 15.5 oz.



6719955
Coupe (2-Pack)
6.4 x 3.9 in. 8 oz.



6410002
White Wine (2-Pack)
8.9 x 3.5 in. 13.5 oz.



6410003
Red Wine (2-Pack)
8.9 x 4.3 in. 20.5 oz.



6410083
Decanter
11.4 x 3.1 in. 34 oz.

MORE

Design Erika Lagerbielke · 2018

The More collection from Orrefors focuses on enhancing the everyday drinking experience. The full potential of every drink is brought to life in a smaller number of carefully crafted, multi functional glasses. Exquisite drinkware at an everyday price.



6310188
Carafe
9.6 x 6.2 in. 50 oz.



6310103
Stemless Wine (4-Pack)
4.6 x 3.3 in. 13 oz.

6310110 (2-Pack)



6310101
Champagne (4-Pack)
8.5 x 2.6 in. 5 oz.

6310108 (2 Pack)



6310102
Wine (4-Pack)
8.5 x 3.3 in. 13 oz.

6310109 (2-Pack)



6310112
Wine XL (4-Pack)
8.9 x 3.9 in. 20 oz.



6310123
Mature (4-Pack)
7.7 x 4.3 in. 16 oz.



6310124
Spirits (4-Pack)
6.1 x 2.7 in. 7 oz.



6310125
Coupe (4-Pack)
5.9 x 3.9 in. 7 oz.



6310153
Schnapps (2-Pack)
7.1 x 2.4 in. 3 oz.



ORGANIC

Design Magnus Forthmeier · 2016

With trees like misty shadows, the serene landscape etched into the surface of the crystal makes this vase pure poetry. A gleaming lake seemingly hiding behind the tree trunks is an optical illusion from the heavy glass bottom. Clean cut design and a hushed decor makes this vase perfect for lush bouquets as well as a piece of art.



ORGANIC

Design Magnus Forthmeier · 2016



6101201
Vase (round, medium)
6.8 x 7.9 in.



6101202
Vase (round, large)
8.1 x 9.4 in.



6101200
Vase (cylinder)
11.8 x 4.2 in.

PEARL

Orrefors Design · 2015



6719788
Dessert Plate (4-Pack)
6.9 in.



6719789
Platter (round)
12.9 in.

PLAZA

Orrefors Design · 2013



6719651
Bowl (small)
3 x 6.3 in.



6719650
Bowl (medium)
3.8 x 8.3 in.



6719648
Vase (small)
8.8 x 5.4 in.

PEAK

Design Martti Rytkönen - 2018

The Peak series is designed for high-life high-jinks. The glasses are perfect for metropolitan soirées with celebs or quiet evenings at the local pub, and you can complement them with clean-lined coasters and straws if you wish. Designer Martti Rytkönen was inspired by the peaks of glaciers reflecting in glittering seas – a design that embraces the dramatic contrasts of nature with the energy and nightlife of the city. Dishwasher safe.

Americans discard more than 30 million tons of plastic a year, and only 8 percent gets recycled. The rest piles up in landfills, is incinerated or becomes litter. There are over five trillion pieces of plastic, weighing more than 250,000 tons, floating in our oceans. That's more than 700 pieces of plastic per person. Reduce waste with all of our signature glassware, including our Peak reusable stainless steel straws, ideal for cold drinks and dinner party cocktails.



6311136
Highball (4-Pack)
5.9 x 2.8 in. 12.5 oz.



6311140
Old Fashioned (4-Pack)
3.4 x 3.1 in. 8.5 oz.



6311141
Double Old Fashioned (4-Pack)
3.6 x 3.4 in. 11.5 oz.



6311175
Padded Non-slip Coasters (4-Pack)
0.1 x 3.9 in.



6311166
Straws & Small Cleaning Brush (4-Pack)
8.3 x 0.2 in.



6320218
Bowl
4.3 x 6.1 in.



POLARIS

Design Martti Rytönen · 2008



6536311
Bowl (small)
4.4 x 5.9 in.



6536312
Bowl (large)
5.4 x 7.5 in.



6536321
Vase
8.6 x 4.9 in.

PRECIOUS

Design Malin Lindahl · 2009

Like the most precious of treasures, designer Malin Lindahl's jewels - a vase, a bowl, a votive and a platter - adorn the contemporary home. The shimmering facets and asymmetrical design give the hand-cut, glistening Orrefors crystal an innovative, inspiring look.



6569262
Votive
2.4 x 4.7 in.



6569271
Dish
1.7 x 9.6 in.



6569212
Bowl
3.7 x 6.3 in.



6569221
Vase
7.5 x 5.8 in.



6569223
Vase (large)
9.3 x 6.9 in.

PRELUDE

Design Nils Landberg · 1957 · Handmade in Sweden

Like the same designer's Illusion series, Prelude was introduced in 1957 and has remained in the Orrefors lineup since. Like Illusion, Prelude is hand-blown, clean and functional, but with a pattern that appears to be leafing organically from the stems



6180017
Wine
7.3 x 2.4 in. 6 oz.



6180014
Flute
8.4 x 1.7 in. 6 oz.

PUCK

Design Lena Bergström · 1999



6509362
Tealight Holder (small)
1.4 x 3.8 in.



6509363
Tealight Holder (large)
2.2 x 3.8 in.



6509365
Tealight Holder (extra large)
3 x 3.8 in.

PULSE

Design Ingegerd Råman · 2013

The Pulse series is designed for the eye, the nose and the palate. The full potential of the drink is brought to life without impairing the character and balance of the glass. The new lively Orrefors where timeless design and good function meet playfulness and contemporary demands. Like being able to wash the glasses in the dishwasher.



6295304
Stemless (4-Pack)
4.2 x 3 in. 11.5 oz.



6295302
Wine (4-Pack)
7.6 x 3.7 in. 12 oz.



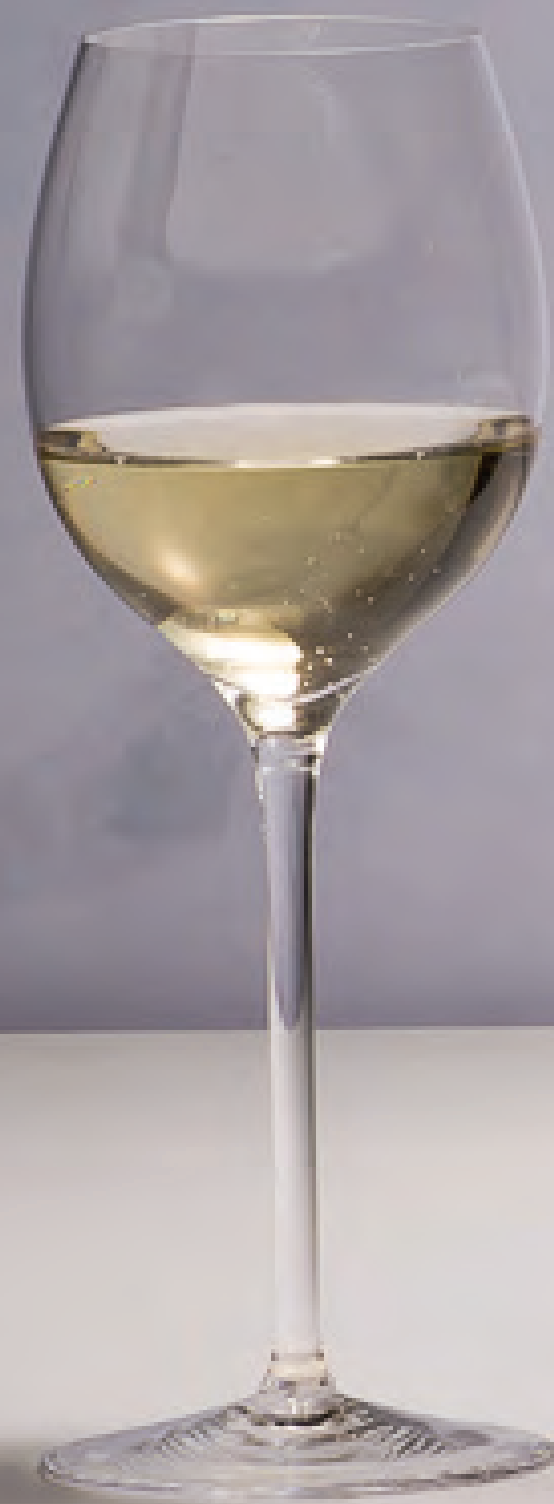
6295303
Beer (4-Pack)
7.8 x 3.5 in. 15 oz.

PREMIER

Design Orrefors - 2019 - Handmade in Sweden

Designed in Sweden, by world-renowned crystal manufacturer Orrefors. The Premier Varietal stemware series brings to you over 200 years of design heritage. The Premier collection is handmade & is designed to highlight the unique flavors & aromas of specific varietal wines, great for entertaining and everyday use.

Orrefors developed these stem shapes to enhance the aroma and flavors of different varietal grapes used in wine making. The highest quality classic handmade, pulled stem. Designed in Sweden. Engineered to be easily stored in every home. Dishwasher safe.



6180113
Riesling (2-Pack)
9.2 x 3.2 in. 14 oz.



6180114
Champagne (2-Pack)
9.2 x 2.8 in. 10 oz.



6180117
Cabernet (2-Pack)
9.2 x 3.9 in. 24 oz.



6180116
Chardonnay (2-Pack)
9.2 x 3.2 in. 10 oz.



6180118
Pinot Noir (2-Pack)
9.2 x 4.6 in. 29 oz.



RASPBERRY

Design Anne Nilsson · 1992

Raspberry is one of Orrefors's most beloved classics. The many round 'drupelets' that give it its raspberry shape create a soft crystal feeling and a glittering brilliance that is highly recognisable. Designer Anne Nilsson is now expanding the series with glorious vases for tulips and cut flowers – but they're just as beautiful on their own. At the same time, frosted-glass versions of the entire series are being introduced, which are lovely when combined with the clear glass pieces. The frosted glass creates a gentler ambience with its velvety glow.



6475761
Votive (small)
2.2 x 3.6 in.



6475762
Votive (medium)
2.7 x 4.3 in.



6475764
Votive (frost, small)
2.2 x 3.6 in.



6475765
Votive (frost, medium)
2.7 x 4.3 in.



6475774
Serving Plate
3 x 15.7 in.



6475712
Bowl (small)
3 x 7.5 in.



6475713
Bowl (medium)
3.9 x 8.1 in.



6475715
Bowl (frost, small)
3 x 7.5 in.



6475716
Bowl (frost, medium)
3.9 x 8.1 in.

RASPBERRY

Design Anne Nilsson · 1992



6101500
Vase (small)
6.3 x 4.9 in.



6101501
Vase (large)
7.9 x 6.1 in.



6101503
Vase (frost, large)
7.9 x 6.1 in.

REVOLUTION

Orrefors Design · 2014

We see these pieces like gears, fitting into each other, creating the movement that leads up to a revolution. We have combined the feel of the heavy crystal with an updated and modern expression. Buy one or combine several, Revolution stands out on its own or blends in depending on the context. One for all, all for one.



6320311
Bowl (small)
4 x 6.8 in.

SAREK

Design Lena Bergström and Volvo Cars Design Team · 2017

Created by acclaimed designer Lena Bergström and Swedish glassmaker Orrefors, Sarek is a collection of handmade crystal glassware representing the best of modern Scandinavian design. It is inspired by the shapes and designs found in the small wooden boxes made of plaited birch bark from people in northern part of Sweden, particularly its distinctive diamond-shaped patterns, while the combination of pale ash with crystal is a contemporary Swedish mix of materials.



THE CRYSTAL EYE



The collaboration between Volvo Cars and Orrefors was initiated when Volvo developed its S60 concept car and Orrefors was given the prestigious mission to design a center console out of crystal. The Swedish crystal was an appreciated interior detail and when Volvo exhibited their concept car "Concept Estate" at the Geneva Motor Show in 2014 Swedish crystal was once again part of the interior. This time in the shape of a crystal gearshift from Orrefors. The stylish gearshift is now a reality, handmade by our skilled glass-workers in Sweden, and an optional feature in the new Volvo XC90 and S90.

"Teaming up with Orrefors is really exciting. The iconic elements of Swedish design, like crystal, is key for Volvo's ambitions to place itself in the top of the automotive industry. And for me as a designer it's pure delight to work with the materials and combine them with a modern Scandinavian design in a high-tech packed premium car environment."
- Robin Page, Head of Interior Design at Volvo Cars.

The XC90 Excellence is based on Volvo's all new XC90 sports utility vehicle, but the similarity ends there. The XC90 Excellence has just four seats compared to the original's seven, creating an enormous amount of additional space for rear seat passengers that helps to deliver an exceptional customer experience. Handmade champagne glasses and a heating or cooling cup holder in crystal glass from Orrefors are major contributors to that ultimate luxury experience of Scandinavian Design.



6509321
Votive
1.5 x 3.9 in.

6590199
City Stopper
3.6 x 1 in.

6320222
Bowl (medium)
4.3 x 6.1 in.

6320224
Bowl with lid (small)
3.3 x 4.4 in.

6590126
Vase
15 x 5.7 in.

SHARE CARAFE

Design Pia Törmell · 2019

The Carafe Share is both modern and classic in character. The stable and outward-angled base contributes strongly to the carafe's expression. The neck is slender and grip-friendly and softly transforms into a pour-friendly mouth. The carafe is free-standing and can be combined with different glasses for different drinks and occasions. It works just as well for wine as for water or juice. The large carafe is adapted for one bottle of wine, and the small carafe corresponds to a half bottle. Machine washable.



6350086
Large Carafe
8.1 x 5.3 in. 41.5 oz.

6350085
Small Carafe
6.5 x 4.3 in. 22 oz.



SOFIERO

Design Gunnar Cyrén · 1961 · Handmade in Sweden



6719845
Old Fashioned (2-Pack)
3.3 x 3 in. 9 oz.



6383402
DOF (2-Pack)
3.7 x 3.8 in. 11 oz.



6719890
Highball (2-Pack)
5.7 x 2.9 in. 13 oz.



6383481
Decanter
9.6 x 4.9 in. 25 oz.



6383412
Bowl (medium)
4.3 x 6.1 in.



6383413
Bowl (large)
5.1 x 7.9 in.



6383433
Bowl (low)
4.3 x 9.4 in.



6383421
Vase (cylinder)
7.9 x 4.3 in.



STREET

Design Jan Johansson · 2006 · Handmade in Sweden

In autumn 2006, Jan Johansson introduced us to Street, a series of bar items with an outspoken masculine air – indeed, its square-cut clear decor and contrasting black details seem practically decadent. Street feature the skilfully rendered cut decor inspired by the streets of New York that makes this collection so successful.



6540104
DOF (2-Pack)
3.5 x 3.4 in. 13 oz.



6719705
Whiskey (2-Pack)
3.4 x 3 in. 8 oz.



6540102
Tumbler (2-Pack)
5.8 x 3 in. 15 oz.

6540103
Whiskey (4 Pack)



6719704
Cognac (2-Pack)
4.3 x 3 in. 5 oz.



6540106
Martini (2-Pack)
5.91 x 4.75 in. 7 oz.



6719706
Champagne (2-Pack)
8.1 x 1.7 in. 5 oz.



6540197
Street Ice Bucket
5.9 x 8 in.



6540183
Decanter
12 x 3.3 in. 35 oz.

STREET SERVEWARE

Orrrefors Designs · 2016



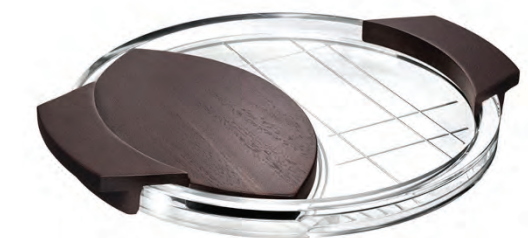
6719833
Chip and Dip
4 x 12 in.



6719835
Salad Bowl
4.4 x 12 in.



6719831
Serving Tray
1.5 x 16.9 in.



6719832
Cheese Platter
1.3 x 16 in.

STRIPE

Orrefors Design · 2014



6719753
Covered Box
2.3 x 3.5 in.

SWEDEN

Design Emma Ekberg · 2017



6130012
Bowl (Cities)
3 x 5.1 in.



6130013
Bowl (Symbols)
3 x 5.1 in.

WEAVE

Design Lena Bergström · 2018 · Handmade in Sweden



6320216
Bowl (loop)
3.1 x 4.4 in.

6320215
Bowl (lyre)
3.1 x 4.4 in.

6320217
Bowl (line)
3.1 x 4.4 in.

TORG

Design Karim Rashid · 2013



6719599
Candlestick (rectangle)
6 x 2.8 in.

6719600
Candlestick (tall)
8.3 x 2.4 in.

6719515
Candlestick (square)
3.8 x 3.8 in.

VALENTINO

Design Martti Rytönen · 2010



6530512
Bowl
3.9 x 8.3 in.

6530562
Votive
2.7 x 4.2 in.



LIGHTING

LIGHTING

Various Artists



6500662
Amour Votive
1.8 x 4 in.



6719895
Carat Candlestick
(brass, small, pair)
7.2 x 4 in.



6590166
Carat Candlestick
(brass, medium, pair)
9.5 x 3.9 in.



6719896
Carat Candlestick
(brass, large, pair)
11.7 x 4 in.



6719396
Carat Candlestick
(small, pair)
7.2 x 4 in.



6590162
Carat Candlestick
(medium, pair)
9.5 x 3.9 in.



6719397
Carat Candlestick
(large, pair)
11.7 x 4 in.



6590161
Carat Votive (small)
2 x 3.7 in.



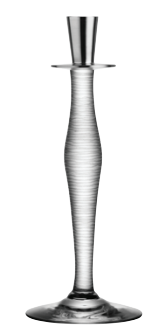
6590163
Carat Votive (large)
2.6 x 4.9 in.



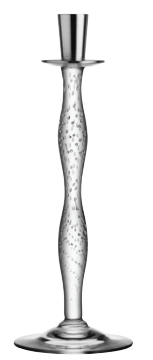
6267063
Cirrus Candlestick
Tall
11.2 x 7.7 in.



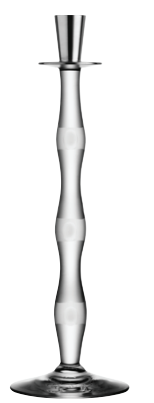
6267062
Cirrus Candlestick
Medium
7.3 x 7.7 in.



6268565
Celeste Candlestick
Lines
11.4 x 4.1 in.



6268566
Celeste Candlestick
Bubbles
13 x 4.3 in.



6268567
Celeste Candlestick
Cut
14.6 x 4.5 in.



6268568
Celeste Candlestick
Stripes
16.1 x 4.7 in.

LIGHTING (CONT.)

Various Artists



6483162
Discus Votive Clear (large)
1.8 x 5.5 in.



6483169
Discus Votive Clear (small)
1.7 x 4.4 in.



6483167
Discus Votive Gold (small, 2-Pack)
1.7 x 4.4 in.



6483163
Discus Votive (large)
1.8 x 5.5 in.



6509362
Puck Tealight Holder
(small)
1.4 x 3.8 in.



6509363
Puck Tealight Holder
(large)
2.2 x 3.8 in.



6509365
Puck Tealight Holder (extra
large)
3 x 3.8 in.



6544563
Delight Votive
2.5 x 4 in.



6719930
Home Fragrance Eric Candle
Blushing Pink
3.5 x 3.4 in.



6719931
Home Fragrance City Candle
Warm Amber & Oakmoss
3.6 x 3.4 in.



6719932
Home Fragrance Peak Candle
Woodland Vanilla
3.6 x 3.6 in.



6475764
Raspberry Votive (frost,
small)
2.2 x 3.6 in.



6475765
Raspberry Votive (frost,
medium)
2.7 x 4.3 in.



6475761
Raspberry Votive (small)
2.2 x 3.6 in.



6475762
Raspberry Votive (medium)
2.7 x 4.3 in.



6521862
Ice Cube Votive
2.6 x 2.8 in.



6719810
Heart Votive
2.2 x 5 in.



6528401
Lightswitch Candle Adapter (2 pack)
1.7 in.



6569262
Precious Votive
2.4 x 4.7 in.



6530562
Valentino Votive
2.7 x 4.2 in.



6719599
Torg Candlestick (rectangle)
6 x 2.8 in.



6719515
Torg Candlestick (square)
3.8 x 3.8 in.



6719599
Torg Candlestick (rectangle)
6 x 2.8 in.



6719600
Torg Candlestick (tall)
8.3 x 2.4 in.

AWARDS



6891101
Apex Award (small)
5 x 3.3 in.

6891102
Apex Award (medium)
6.8 x 3.3 in.

6891103
Apex Award (large)
8.8 x 3.3 in.

6891001
Concord Award (small)
5.5 x 2.8 in.

6891002
Concord Award (medium)
6.5 x 2.8 in.

6891003
Concord Award (large)
7.5 x 2.8 in.



6890301
Glacier Award (small)
8 x 2.5 in.

6890302
Glacier Award (medium)
10 x 2.5 in.

6890303
Glacier Award (large)
12 x 2.5 in.

6890901
Hancock Award (small)
6 x 2.8 in.

6890902
Hancock Award (medium)
7 x 2.8 in.

6890903
Hancock Award (large)
8 x 2.8 in.



6890601
Ice Block Award (small)
4.8 x 2.2 in.

6890602
Ice Block Award (large)
6 x 7 in.



6890501
Pinnacle Award (small)
8 x 3.5 in.

6890502
Pinnacle Award (medium)
10 x 3.5 in.

6890503
Pinnacle Award (large)
12 x 3.5 in.



6719902
Nordic Star (small)
5.5 x 5 in.

6719903
Nordic Star (medium)
6.3 x 5.5 in.

6719904
Nordic Star (large)
7.1 x 6.1 in.



6890801
Manhattan Award (small)
9 x 2.5 in.

6890802
Manhattan Award (large)
10.5 x 2.5 in.

6890401
Monument Award (small)
6 x 2.5 in.

6890402
Monument Award (medium)
10 x 2.5 in.

6890403
Monument Award (large)
12 x 2.5 in.



6890701
Ranier Award (small)
8 x 2.5 in.

6890702
Ranier Award (medium)
10 x 2.5 in.

6890703
Ranier Award (large)
12 x 2.5 in.



6719914
Monument Golf (small)
5.9 x 2.3 in.

6719915
Monument Golf (medium)
7.9 x 3.1 in.

6719916
Monument Golf (large)
9.9 x 4 in.

6719911
Manhattan Globe (small)
5.9 x 2.3 in.

6719912
Manhattan Globe (medium)
7.9 x 3.1 in.

6719913
Manhattan Globe (large)
9.9 x 4 in.



6719899
Shooting Star (small)
7.1 x 3.3 in.

6719900
Shooting Star (medium)
8.9 x 4.3 in.

6719901
Shooting Star (large)
10.6 x 5.3 in.

6890201
Starlite Award (small)
6 x 3.5 in.

6890202
Starlite Award (medium)
8 x 3.5 in.

6890203
Starlite Award (large)
10 x 3.5 in.



6891402
Vision Round Desk Clock
1.1 x 4.7 in.



6890001
Wall Street Business Card Holder
1.5 x 4 in.



6891202
Black Base (tall)
1.5 x 3.5 in.



6891201
Black Base (long)
1.6 x 5.9 in.



6891501
Summit Award (small)
3.5 x 2.3 in.



6891502
Summit Award (medium)
4.5 x 3.1 in.



6891503
Summit Award (large)
5.7 x 3.9 in.



ENGRAVING AND MONOGRAMMING

We offer high quality engraving and monogramming on most pieces, whenever is physically possible.

We offer a wide range of customization, with options that are suitable for personalization, special messages, weddings and company gift giving. Company logos can also be engraved onto the piece.

- Personalize any piece with your special inscription.
- Please allow three business days for engraving.
- Multiple fonts and styles are available.
- All orders are confirmed with a pdf file for your approval prior to engraving.
- Our engraving studio is equipped with the latest state-of-the-art computerized technology producing the highest quality engraving available.



ETCHING LETTERING STYLES

BOOKMAN BASKERVILLE/BASKERVILLE ITALIC CENTURY *Chancery* *Freestyle Script* GARAMOND HELVETICA
Old English OPTIMA *Park Avenue* *Shelley Volante* SOUVENIR UNIVERSITY TIMES/TIMES ITALIC

MONOGRAM STYLES

INTERLOCKING MONOGRAM TRIPLE BAR MONOGRAM OPEN LETTER MONOGRAM CHISEL CUT MONOGRAM SINGLE LETTER FLORAL ROUND MONOGRAM SINGLE LETTER SCRIPT STRAIGHT LINE


ART DESIGNS

GOLF CREST GOLF RACKETS SOCCER BALL CAP/DIPLOMA ROSES DOVE & RINGS WEDDING BELLS HEART STORK & BABY

 SCALES OF JUSTICE CADEUUS LIBERTY BELL US FLAG EAGLE SAILING THEATRE STAR OF DAVID STAR MUSIC


Additional art designs available. Please call with special requests.

LAST CALL

Our last call assortment allows you to acquire a product before we take it out of our range.
Some of these products are the last to be procured worldwide.





6719467
Eko Bowl
Small Clear
5 x 4.8 in.



6719492
Eko Bowl
Small Amber
5 x 4.8 in.



6719653
Cathedral
Vase medium
7 x 6.5 in.



6719656
Cathedral
Vase small
6.4 x 7 in.



6719479
Klone
Cylinder Vase
10 x 3 in.



6590532
Karl Lagerfeld
Tumbler Black (2-Pack)
2.2 x 3 in. 5 oz.



6591032
Karl Lagerfeld
Tumbler White (2-Pack)
2.2 x 3 in. 5 oz.



6891402
Vision
Round Desk Clock
1.1 x 4.7 in.



6101210
Confusion Vase Bowl
(large)
8.1 x 9.4 in.



6101209
Confusion
Vase/Bowl (medium)
6.8 x 7.9 in.



6101208
Confusion
Vase/Bowl (small)
5.2 x 6.1 in.



6535511
Pond Grass
Bowl
2.9 x 4.8 in.



6535513
Pond Grass
Bowl
5.3 x 8.8 in.



6719582
Swerve
Tumbler (2-Pack)
6.1 x 2.8 in. 19 oz.



6719826
Intermezzo Satin
Tumbler/Juice (2-pack)
4.3 x 2.7 in. 8 oz.



6290817
Zephyr
Red Wine
6.6 x 3.5 in. 16.25 oz



6719824
Intermezzo Satin
Snifter (2-Pack)
6 x 3 in. 9 oz



6577485
Intermezzo Satin
Decanter
12 x 3.8 in. 37 oz.



6719522
Tre Vase
Lime
9.4 x 4.1 in.



6518142
Puck Penholder
1.4 x 3.8 in.



6719625
Totem Harmony Violet
Candlestick (2-Pack)
3.5 x 2 in.



6719627
Totem Harmony Red
Candlestick (2-Pack)
3.5 x 2 in.



6719782
Totem Majestic Octagonal
Candlestick
5.6 x 4 in.



6591016
Karl Lagerfeld
Wine White Medium
7.2 x 3 in. 7 oz.



6591018
Karl Lagerfeld
Wine White Large
7.7 x 3.1 in. 10 oz.



6590452
Karl Lagerfeld
Liqueur Clear
3.8 x 2.5 in. 2 oz.



6590437
Karl Lagerfeld
All Purpose Clear
5.3 x 3.5 in. 9 oz.



6292216
Balans
Wine
8.9 x 2.8 in. 10 oz.



RETAILERS

Orrefors can today be found worldwide at well-stocked boutiques, exclusive department stores, finest hotels, and in the best restaurants, and has a long and prosperous relationship with some of the worlds leading and upscale department stores.

SOCIAL MEDIA



SHOWROOMS

NEW YORK, USA
41 Madison Ave, Fl 9th
www.orrefors.us

ATLANTA, USA
AmericasMart
235 Williams St. NW Ste 893
www.k2tshowroom.com

KOSTA, SWEDEN
Stora vägen 96
365 43 Kosta

STOCKHOLM, SWEDEN
Barnhusgatan 16
111 23 Stockholm

GOTHENBURG, SWEDEN
Kungssportsavenyen 10
411 36 Göteborg

SHANGHAI, CHINA
345 Shilong Road, No. 27
www.orrefors.cn

COPENHAGEN, DENMARK
Lyskær 13A
2730 Herlev

OSLO, NORWAY
Karenslyst Allé 5, 3; etg
0278 Oslo

ESPOO, FINLAND
Juvan Teollisuuskatu 12
02920 Espoo

APPENDIX

IN ALPHABETICAL ORDER A-Z

<i>Collections</i>	29	Helena	48	Puck.....	64
Amour	30	Home Fragrance.....	49	Pulse	64
Argyle.....	30	Ice.....	50	Raspberry.....	67
<i>Awards</i>	81	Ice Cube.....	50	Revolution	68
Beer.....	31	Intermezzo.....	51	Sarek.....	69
Bloom	32	<i>Last Call</i>	87	Sense	23
Carat.....	33	Legend	53	Share Carafe.....	71
Carat City Stoppers.....	35	Light Shadow Bulbs	15	Sofiero	72
Celeste	36	<i>Lighting</i>	77	Squeeze	25
Cirrus	13	Light Switch	24	Street Barware.....	73
City.....	37	Merlot	16	Street Serveware	74
Crazy Heart.....	28	Metropol	55	Stripe	75
Delight.....	40	Mingus	54	Sweden.....	75
Difference.....	39	More.....	57	<i>Timeless Favorites</i>	27
Discus.....	40	New Arrivals	6-31	The Sparkling Devil	18
Dizzy Diamond.....	40	Nobel	17	Torg.....	76
Ebon	14	O-Time	19	Valentino	76
Enjoy	41	Organic.....	60	Wave.....	28
Erik.....	42	Peak.....	61	Weave	75
Explicit.....	43	Pearl.....	59		
Fashion	43	Plaza	60		
Frames	43	Pluto Candlesticks	21		
Gin & Tonic	44	Pluto	22		
Glacial	45	Polaris.....	63		
Graphic.....	46	Precious	63		
Heart	47	Prelude.....	64		
		Premier	65		

Crystal glass from Orrefors have always been characterized by innovative design and skilful craftsmanship. Innovation and tradition are also qualities that manifest themselves in the beautiful glass series of Orrefors. Orrefors is renowned all over the world for high quality in both form and function.

For inspiration please follow us at

 @orrefors_usa  facebook.com/orrefors_usa

ORREFORS 

41 Madison Avenue 9th Floor
New York, NY 10010

(800) 351-9842

orrefors.us